



BORA S

PHOTOMETRY



AYRTON
Digital Lighting



Total Flux	41216 lm (@zoom 128, integrating sphere measurement, Fan mode auto)
-------------------	---

CCT @LED engin	8000 (±500K)
CCT @open	6800 (±500K)
Ra @open	70 (±2)
TLCI	45
TM-30	Rf: 69.3 Rg: 92.9

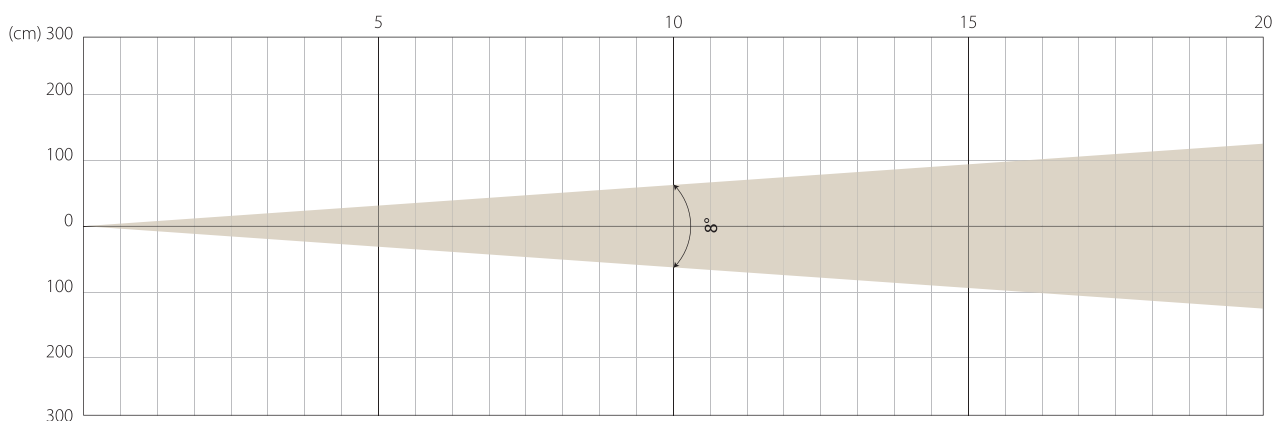
Fan Mode	Noise Level (dBA)	by Goniometer (lm)	by Sphere (lm)
Auto	45,6	34172	41008
Stage	51,5	35658	41216
Silence	43,2	24586	31477
Super Silence	34,4	16399	20659

Note: noise measured @1m distance, static status, ambient 31 dBA.

Voltage / Power	120-240V, 50-60Hz	1150 W
Fixture Dimension / Weight	494 x 737x 280 mm	37.8 kg
Packing Dimension / Weight	660 x 675 x 560 mm	55 kg

MIN ZOOM

Beam Opening

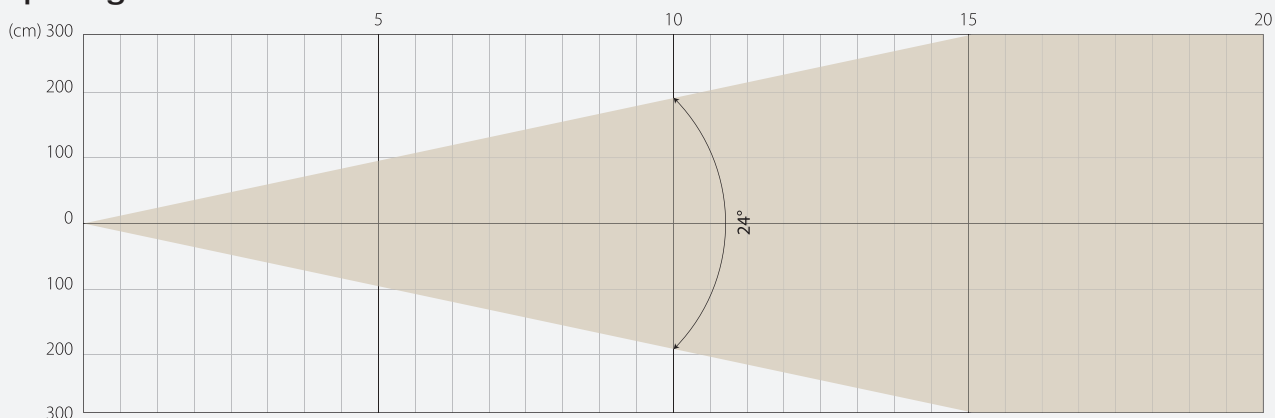


Intensity

Distance (m)	5		10		15		20	
unit	lux	diameter	lux	diameter	lux	diameter	lux	diameter
White	84134	0,7	21033	1,4	9348	2,1	5258	2,8

MIDDLE ZOOM

Beam Opening

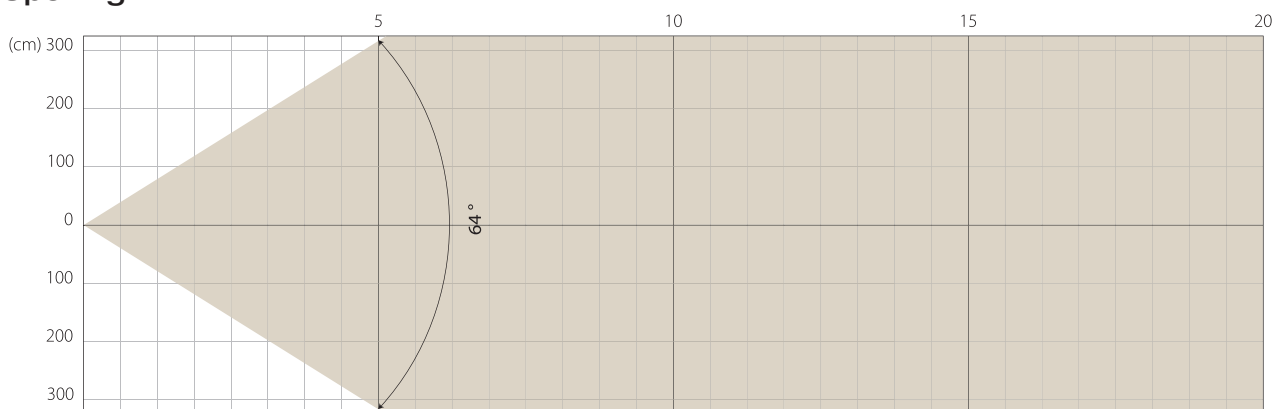


Intensity

Distance (m)	5		10		15		20	
unit	lux	diameter	lux	diameter	lux	diameter	lux	diameter
White	11111	2,13	2778	4,25	1235	6,38	694	8,5

MAX ZOOM

Beam Opening



Intensity

Distance (m)	5		10		15		20	
unit	lux	diameter	lux	diameter	lux	diameter	lux	diameter
White	1965	6,25	491	12,5	218	18,75	123	24,99

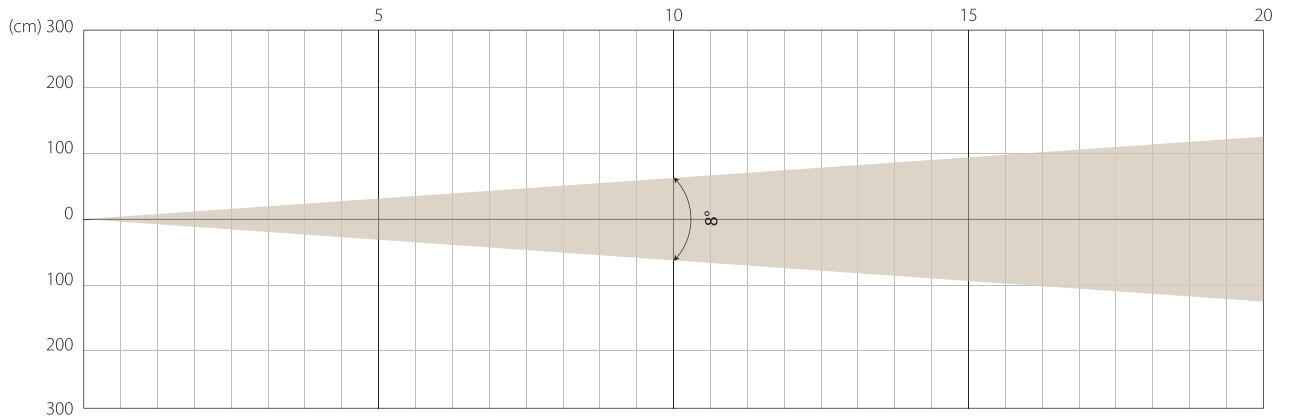
Note: Measurement done with Goniometer

STAGE MODE

NATIVE CRI GREATER THAN 70

MIN ZOOM

Beam Opening

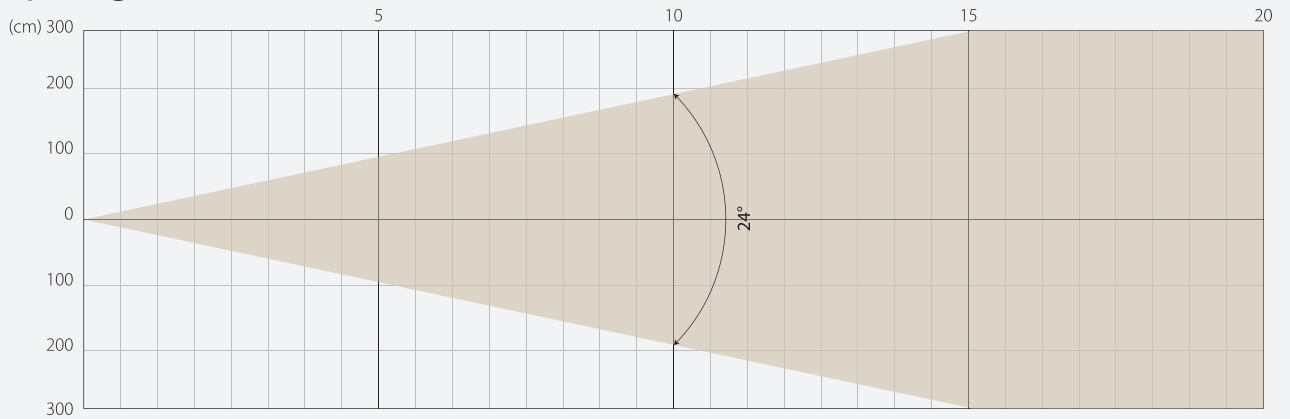


Intensity

Distance (m)	5		10		15		20	
unit	lux	diameter	lux	diameter	lux	diameter	lux	diameter
White	89429	0,7	22357	1,4	9937	2,1	5589	2,8

MIDDLE ZOOM

Beam Opening

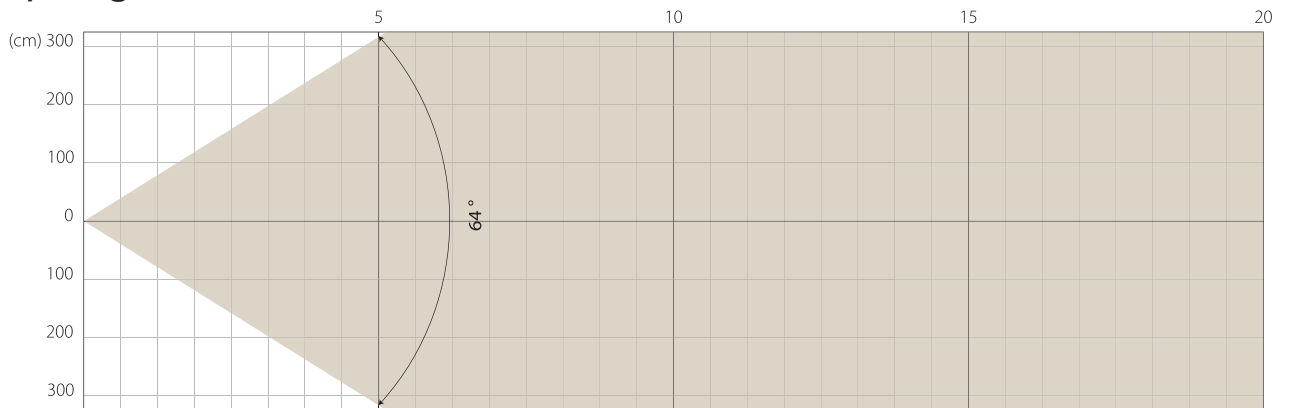


Intensity

Distance (m)	5		10		15		20	
unit	lux	diameter	lux	diameter	lux	diameter	lux	diameter
White	11592	2,13	2898	4,25	1288	6,38	724	8,5

MAX ZOOM

Beam Opening



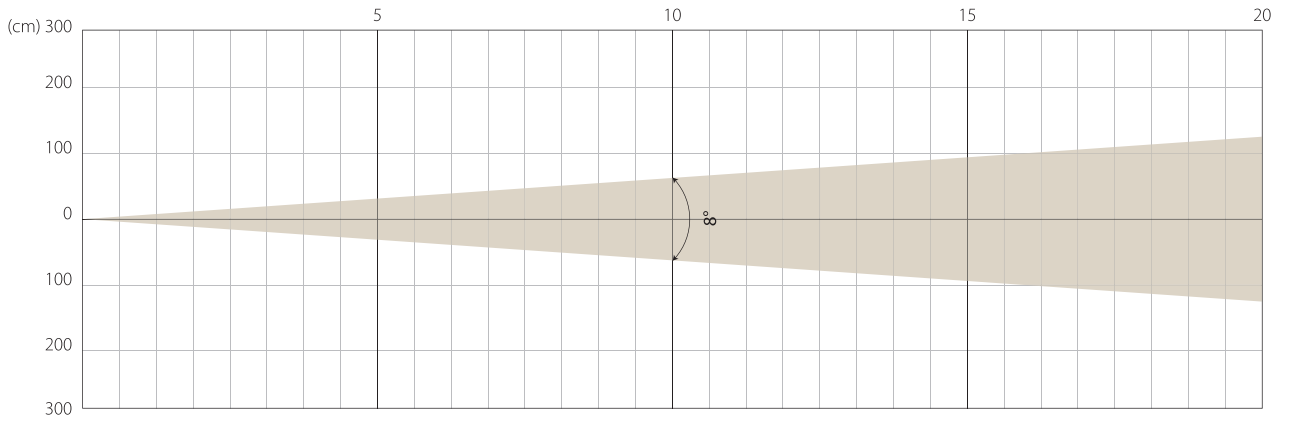
Intensity

Distance (m)	5		10		15		20	
unit	lux	diameter	lux	diameter	lux	diameter	lux	diameter
White	2064	6,25	516	12,5	229	18,75	129	24,99

Note: Measurement done with Goniometer

MIN ZOOM

Beam Opening

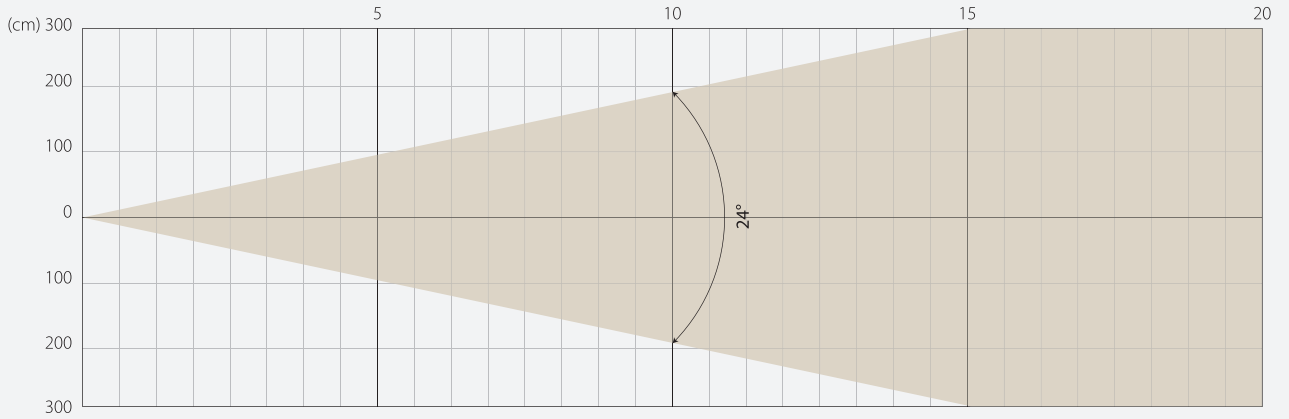


Intensity

Distance (m)	5		10		15		20	
unit	lux	diameter	lux	diameter	lux	diameter	lux	diameter
White	59740	0,7	14935	1,4	6638	2,1	3734	2,8

MIDDLE ZOOM

Beam Opening

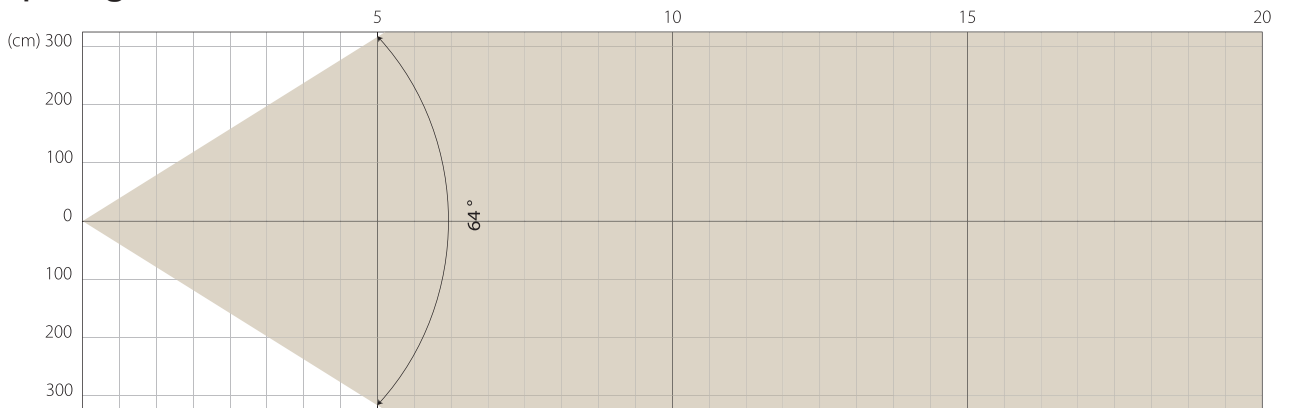


Intensity

Distance (m)	5		10		15		20	
unit	lux	diameter	lux	diameter	lux	diameter	lux	diameter
White	7963	2,13	1991	4,25	885	6,38	498	8,5

MAX ZOOM

Beam Opening



Intensity

Distance (m)	5		10		15		20	
unit	lux	diameter	lux	diameter	lux	diameter	lux	diameter
White	1411	6,25	353	12,5	157	18,75	88	24,99

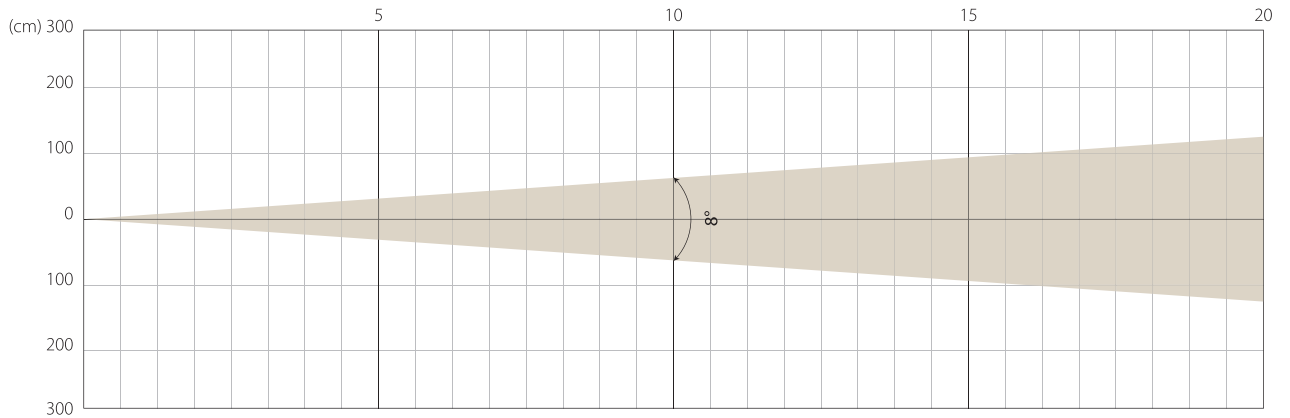
Note: Measurement done with Goniometer

SUPER SILENCE MODE

NATIVE CRI GREATER THAN 70

MIN ZOOM

Beam Opening

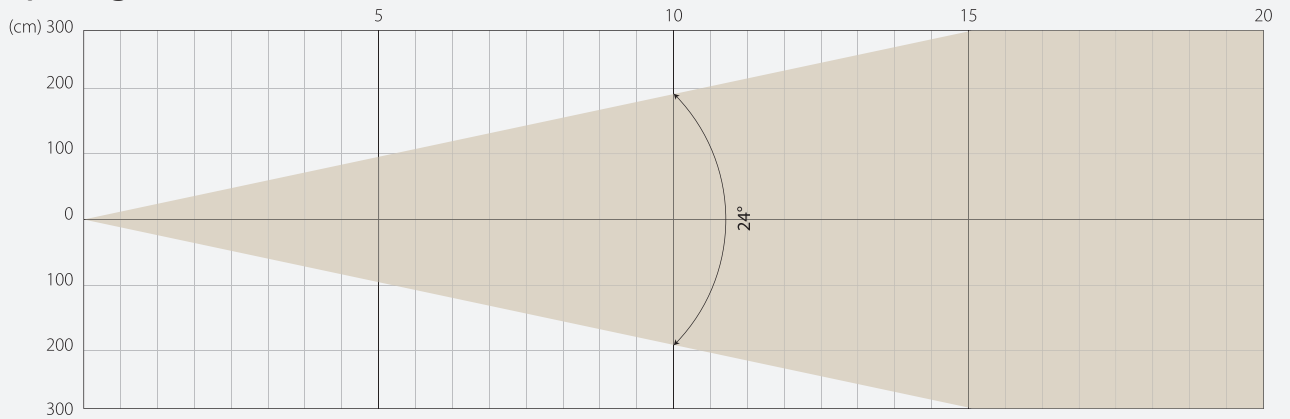


Intensity

Distance (m)	5		10		15		20	
unit	lux	diameter	lux	diameter	lux	diameter	lux	diameter
White	39478	0,7	9870	1,4	4386	2,1	2467	2,8

MIDDLE ZOOM

Beam Opening

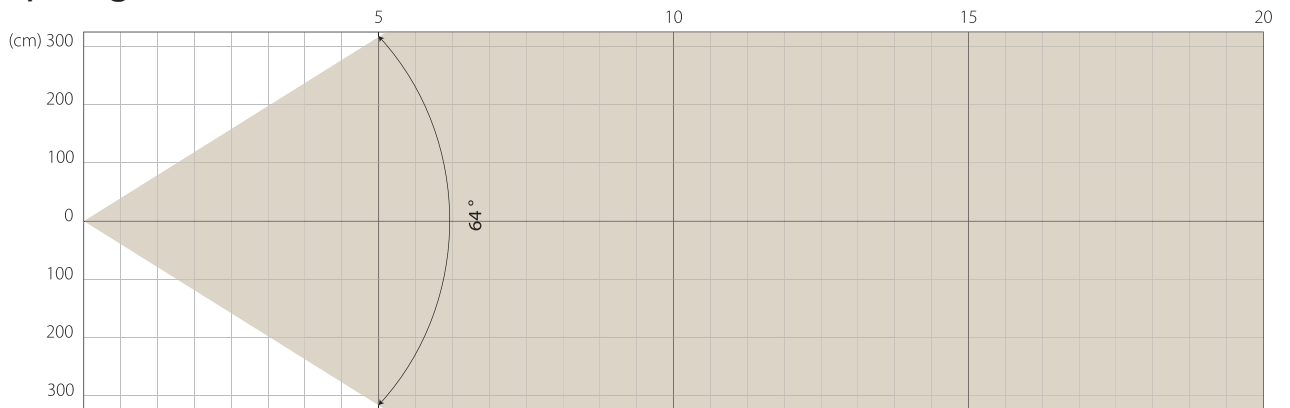


Intensity

Distance (m)	5		10		15		20	
unit	lux	diameter	lux	diameter	lux	diameter	lux	diameter
White	5279	2,13	1320	4,25	587	6,38	330	8,5

MAX ZOOM

Beam Opening

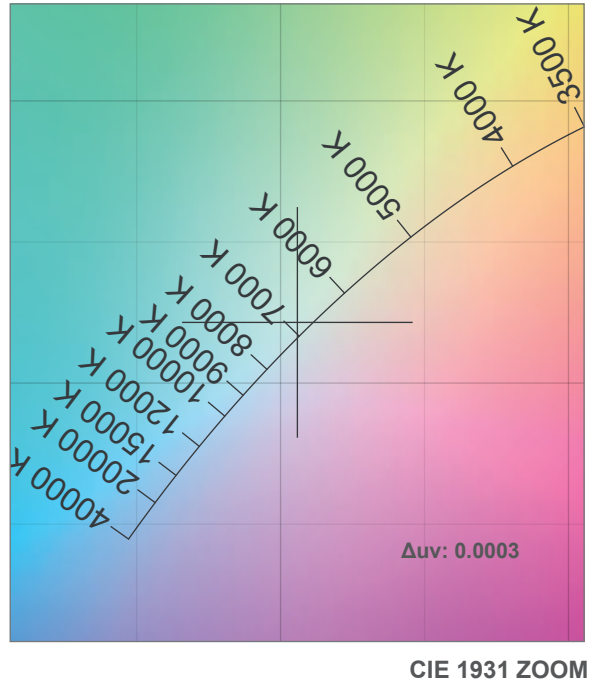
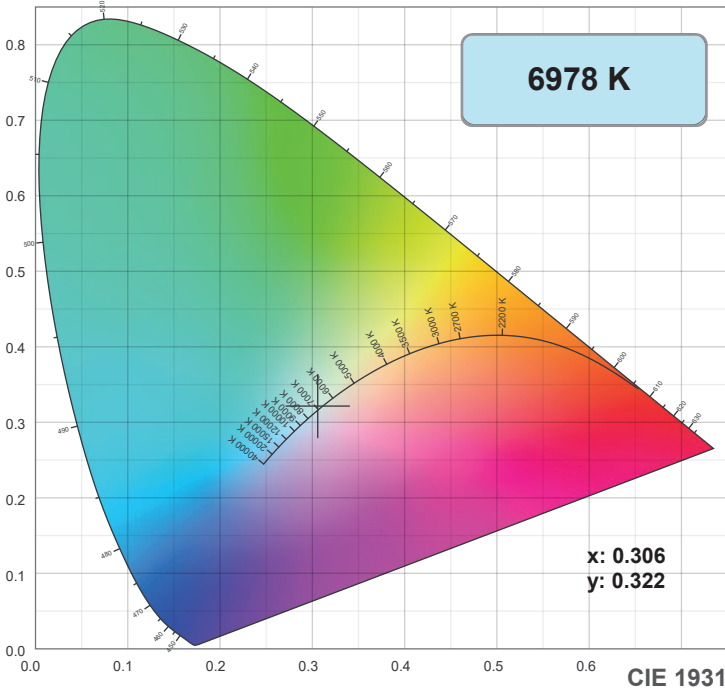


Intensity

Distance (m)	5		10		15		20	
unit	lux	diameter	lux	diameter	lux	diameter	lux	diameter
White	932	6,25	233	12,5	104	18,75	58	24,99

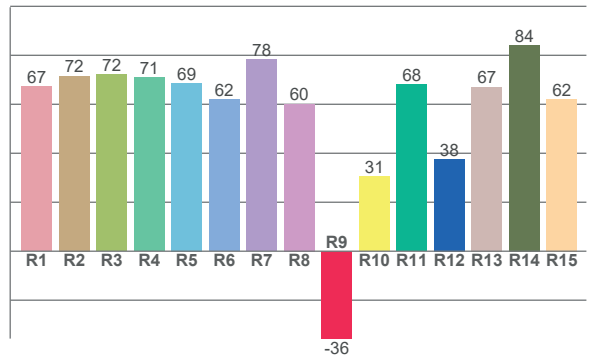
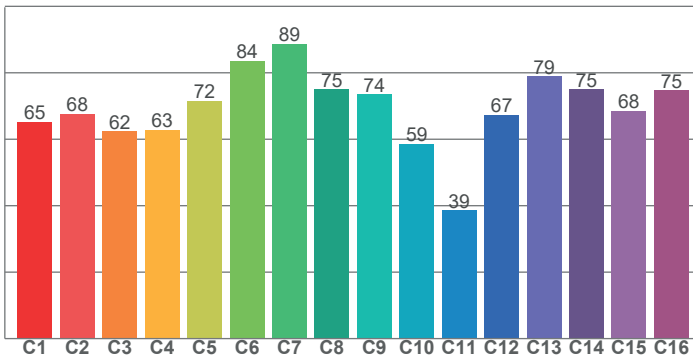
Note: Measurement done with Goniometer

COLOR DETAILS



TM-30: 69.3

CRI: 68.9 (R1-R8)



CRI R values, only R1-R8 are used to calculate final CRI value

R1	R2	R3	R4	R5	R6	R7	R8	R9	R10	R11	R12	R13	R14	R15
67.3	71.6	72.2	71.0	68.7	61.9	78.3	60.2	-35.7	30.6	68.1	37.6	67.1	84.2	62.1

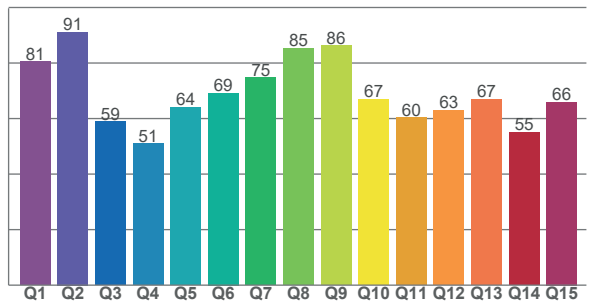
TM30 C values, 16 binned values out of total of 99 C values

C1	C2	C3	C4	C5	C6	C7	C8	C9	C10	C11	C12	C13	C14	C15	C16
65.2	67.6	62.4	62.8	71.6	83.6	88.7	75.0	73.5	58.5	38.6	67.4	78.9	75.0	68.5	74.7

CQS Q values

Q1	Q2	Q3	Q4	Q5	Q6	Q7	Q8	Q9	Q10	Q11	Q12	Q13	Q14	Q15
80.5	91.2	58.9	51.0	64.1	69.2	74.8	85.3	86.2	67.0	60.3	63.0	66.9	55.1	65.9

CQS: 67.2



Color parameters

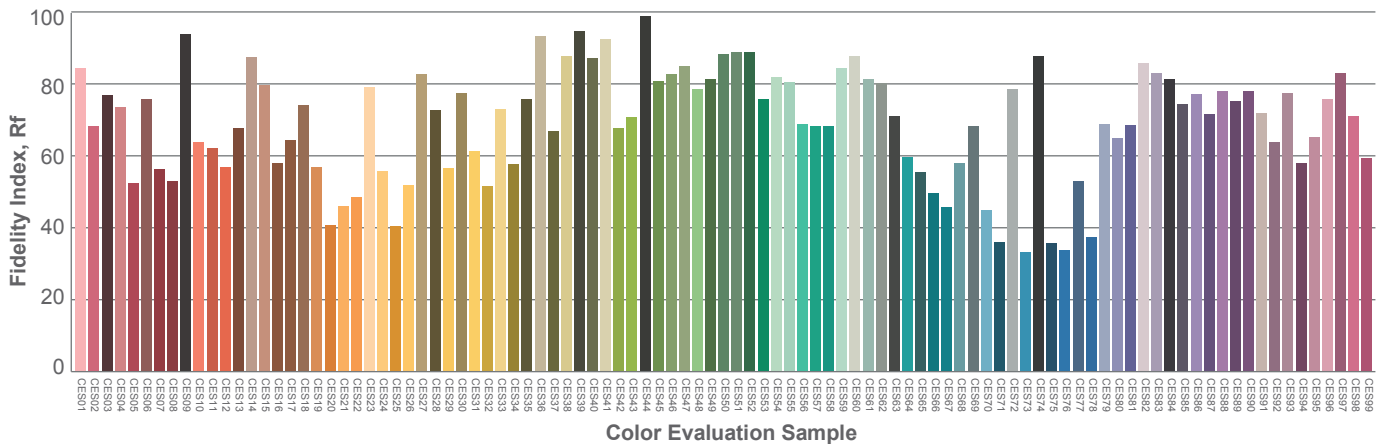
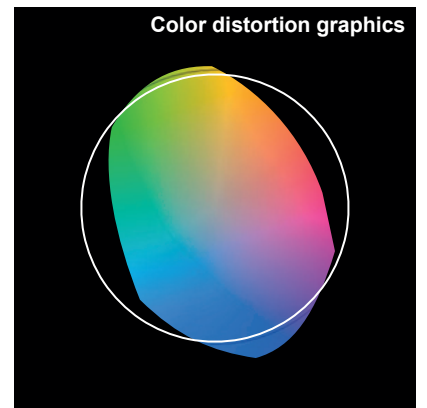
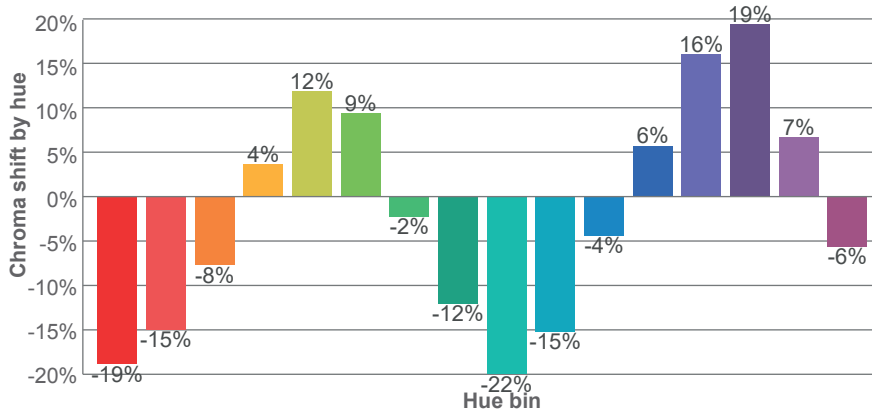
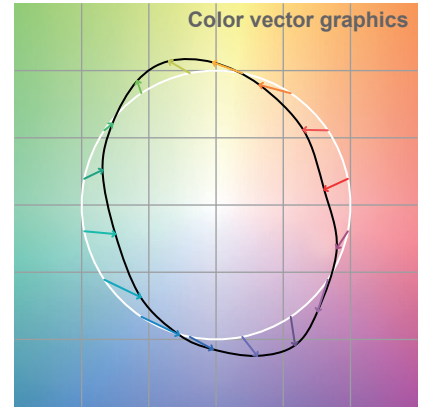
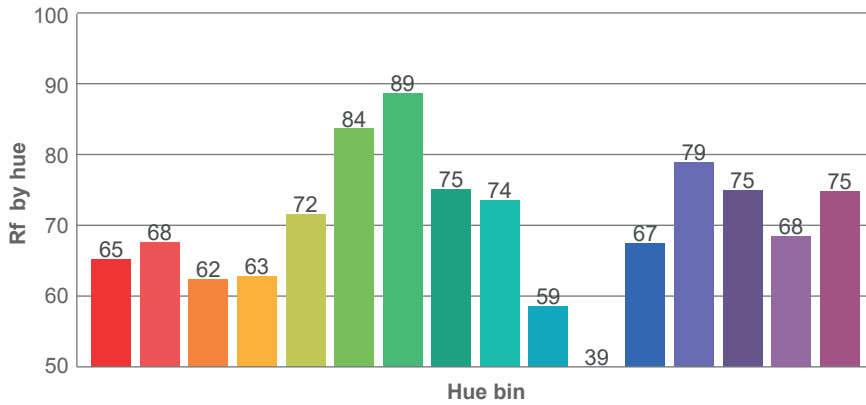
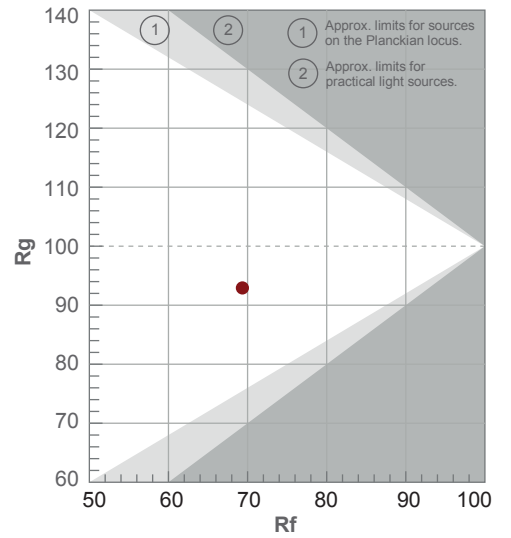
Color temperature	Color rendering index	Red component	Color fidelity	Color gamut	Color quality scale	Color coordinate cie 1931	Color coordinate cie 1931	Color coordinate	Color coordinate	Color deviation from black body
CCT	CRI	CRI R9	TM30 Rf	TM30 Rg	CQS	x	y	u	v	Δuv
6978 K	68.9	-35.7	69.3	92.9	67.2	0.306	0.322	0.196	0.309	0.0003

TM-30 DETAILS

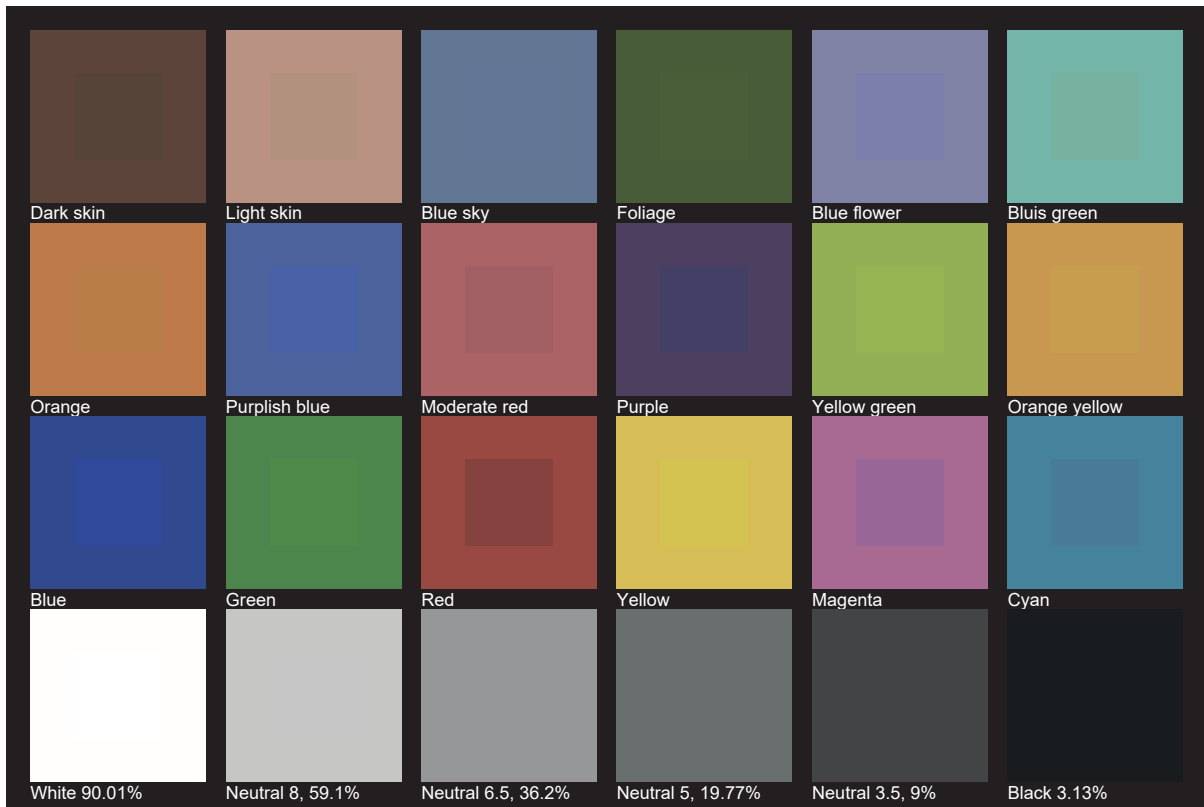
Rf 69.3
Fidelity index Rf

Rg 92.9
Gamut index Rg

Hue Bin	R _f	Shifts (%)	
		Chroma	Hue
1	65	-19%	-5%
2	68	-15%	10%
3	62	-8%	23%
4	63	4%	23%
5	72	12%	13%
6	84	9%	-2%
7	89	-2%	-7%
8	75	-12%	-9%
9	74	-22%	7%
10	59	-15%	26%
11	39	-4%	31%
12	67	6%	18%
13	79	16%	8%
14	75	19%	-9%
15	68	7%	-24%
16	75	-6%	-14%



TLCI 45





AYRTON

Digital Lighting