



DIABLO TC

PHOTOMETRY



AYRTON
Digital Lighting



Total Flux	13888 lm (@zoom 128, integrating sphere measurement, Fan mode auto)
-------------------	---------------------------------------------------------------------

CCT @LED engin	7000 (±500K)
CCT @open	6500 (±500K)
Ra @open	90 (±2)
TLCI	90
TM-30	Rf: 87,1 Rg: 93,8

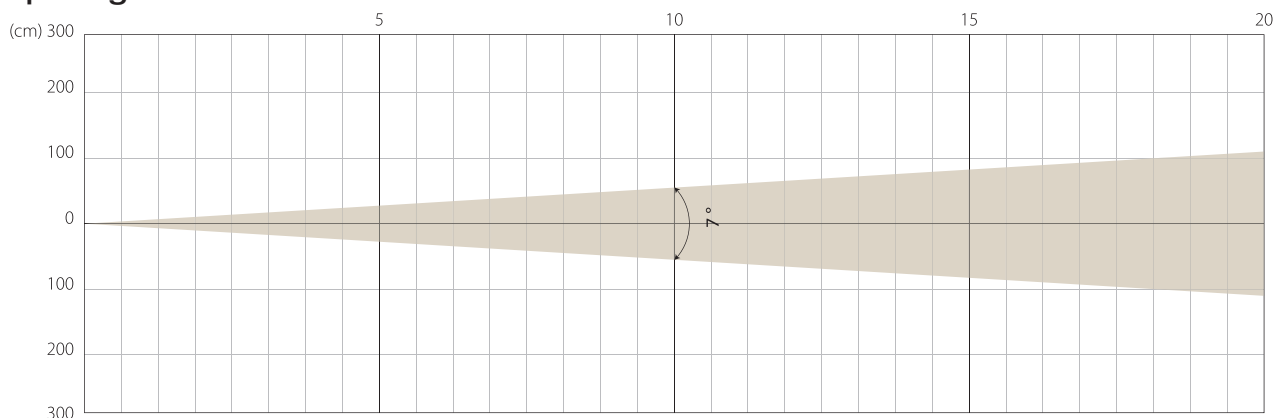
Fan Mode	Noise Level (dBA)	by Goniometer (lm)	by Sphere (lm)
Auto	44,9	11203	13586
Stage	47,3	11197	13888
Silence	39,6	7275	11783
Super Silence	34,7	6681	8227

Note: noise measured @1m distance, static status, ambient 31 dBA.

Voltage / Power	100-240V, 50-60HZ	550 W
Fixture Dimension / Weight	365 x 591 x 212 mm	22 kg
Packing Dimension / Weight	445 x 750 x 295 mm	30,5 kg

MIN ZOOM

Beam Opening

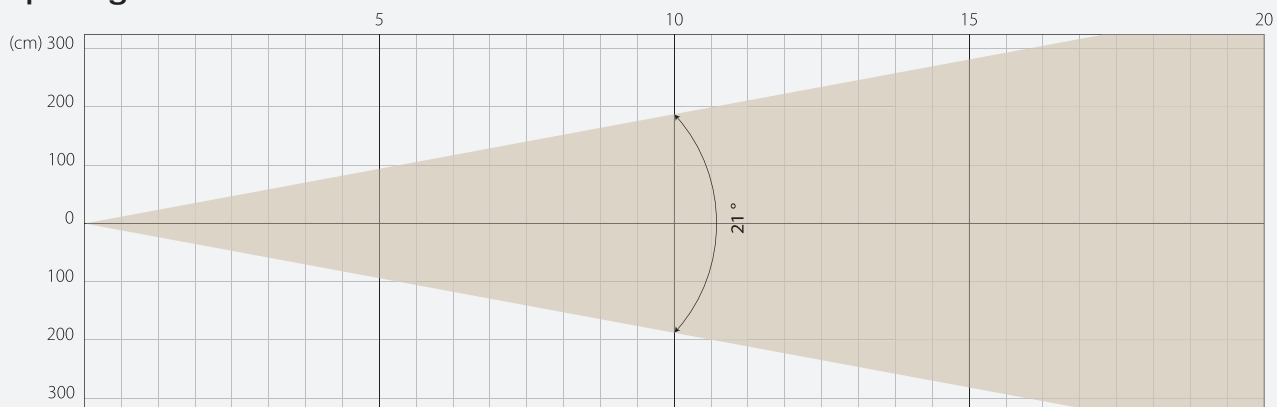


Intensity

Distance (m)	5		10		15		20	
unit	lux	diameter	lux	diameter	lux	diameter	lux	diameter
White	24854	0,61	6213	1,22	2762	1,83	1553	2,45

MIDDLE ZOOM

Beam Opening

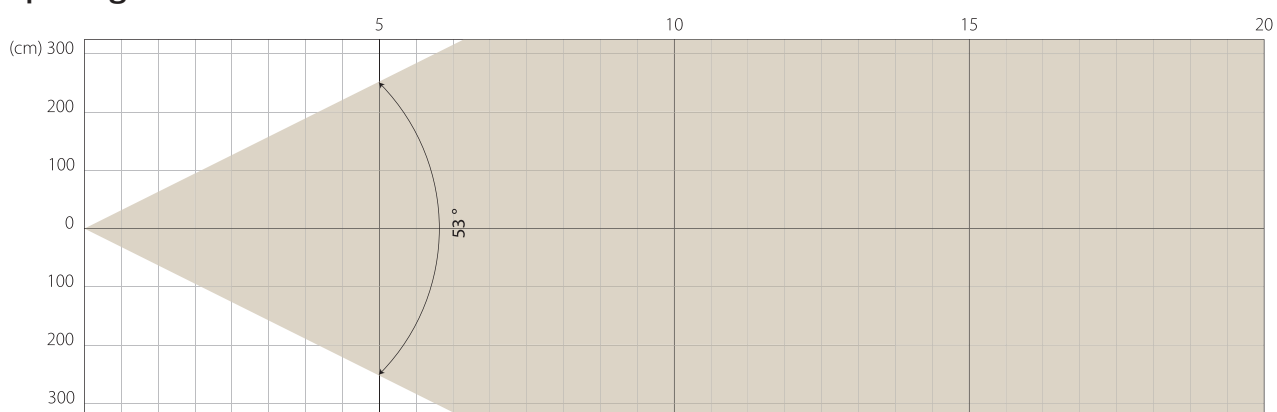


Intensity

Distance (m)	5		10		15		20	
unit	lux	diameter	lux	diameter	lux	diameter	lux	diameter
White	5202	1,85	1300	3,71	578	5,56	325	7,41

MAX ZOOM

Beam Opening



Intensity

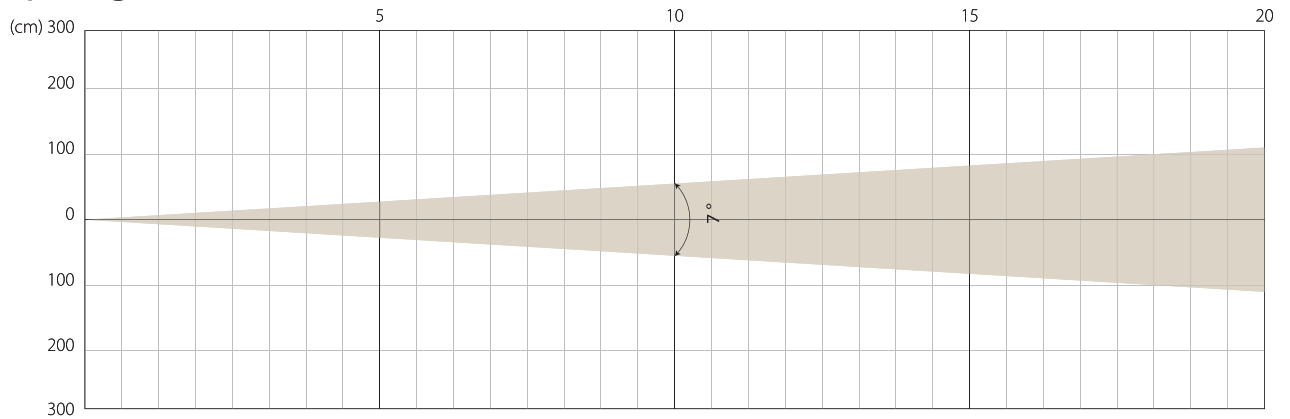
Distance (m)	5		10		15		20	
unit	lux	diameter	lux	diameter	lux	diameter	lux	diameter
White	940	4,99	235	9,97	104	14,96	59	19,94

STAGE MODE

NATIVE CRI GREATER THAN 90

MIN ZOOM

Beam Opening

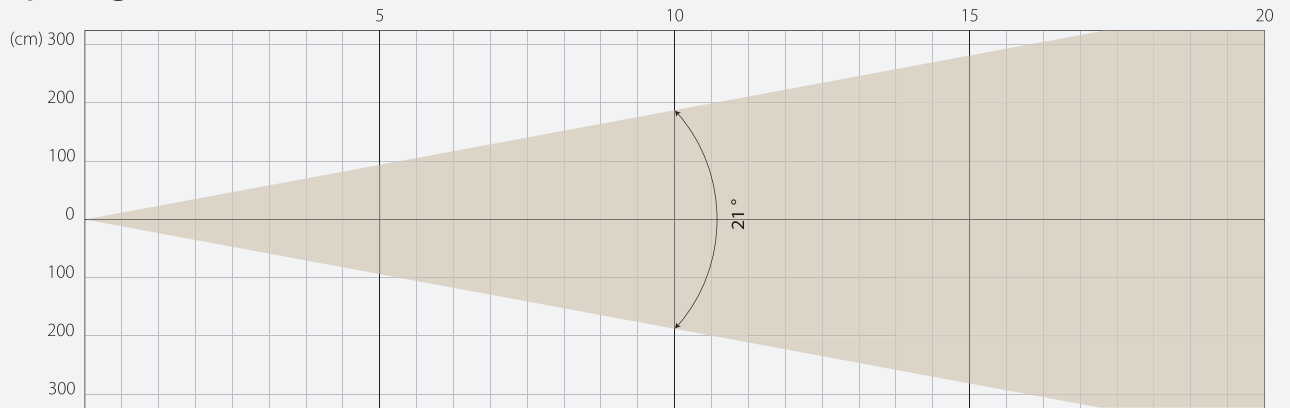


Intensity

Distance (m)	5		10		15		20	
unit	lux	diameter	lux	diameter	lux	diameter	lux	diameter
White	25441	0,61	6360	1,22	2827	1,83	1590	2,45

MIDDLE ZOOM

Beam Opening

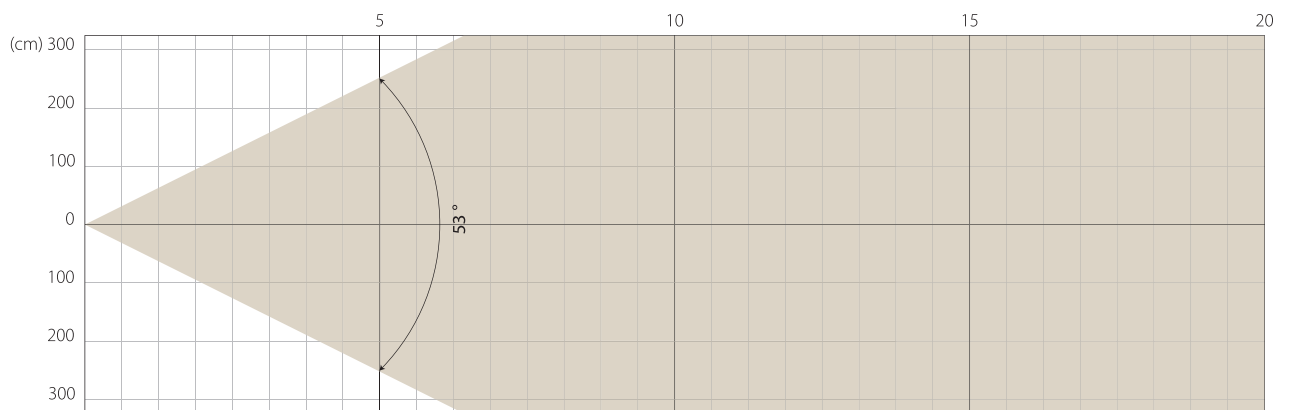


Intensity

Distance (m)	5		10		15		20	
unit	lux	diameter	lux	diameter	lux	diameter	lux	diameter
White	5247	1,85	1312	3,71	583	5,56	328	7,41

MAX ZOOM

Beam Opening

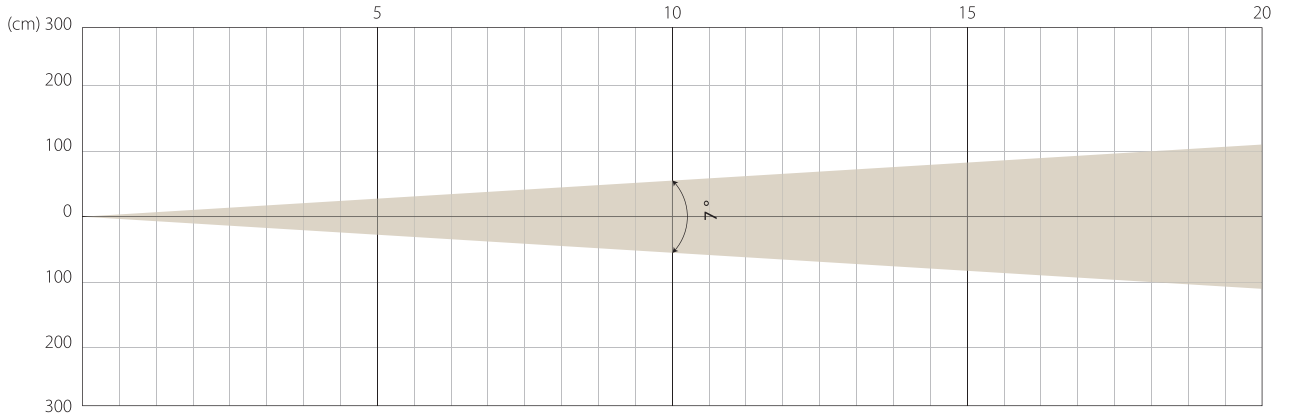


Intensity

Distance (m)	5		10		15		20	
unit	lux	diameter	lux	diameter	lux	diameter	lux	diameter
White	953	4,99	238	9,97	106	14,96	60	19,94

MIN ZOOM

Beam Opening

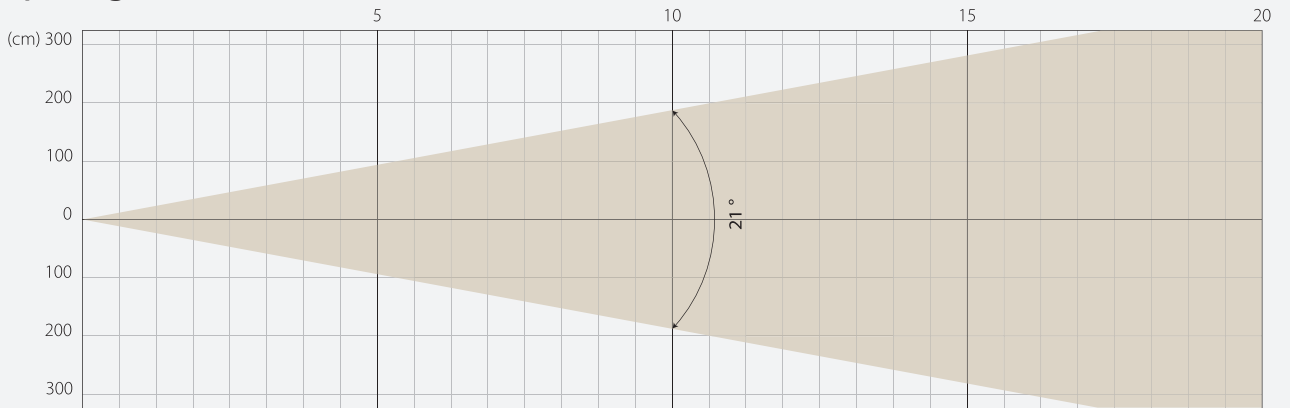


Intensity

Distance (m)	5		10		15		20	
unit	lux	diameter	lux	diameter	lux	diameter	lux	diameter
White	16037	0,61	4009	1,22	1782	1,83	1002	2,45

MIDDLE ZOOM

Beam Opening

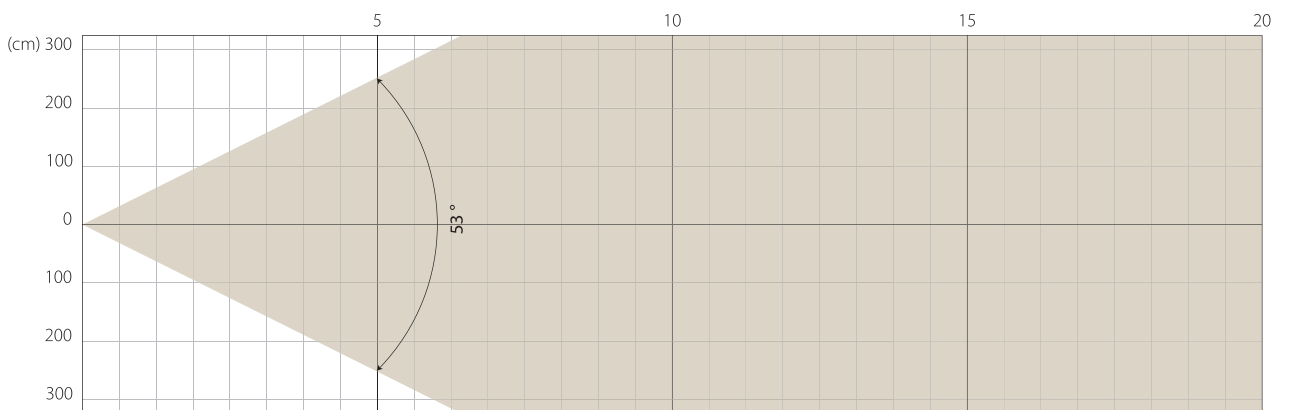


Intensity

Distance (m)	5		10		15		20	
unit	lux	diameter	lux	diameter	lux	diameter	lux	diameter
White	3377	1,85	844	3,71	375	5,56	211	7,41

MAX ZOOM

Beam Opening



Intensity

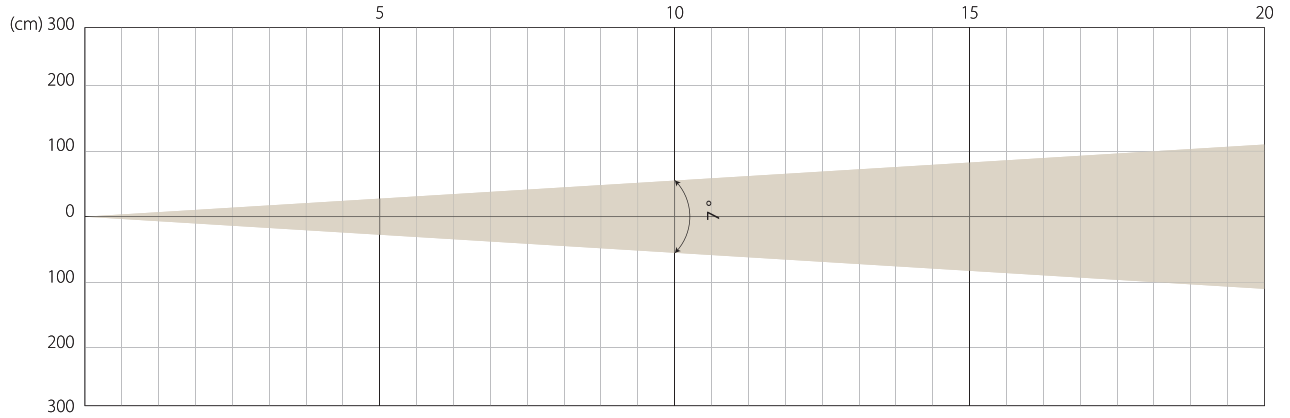
Distance (m)	5		10		15		20	
unit	lux	diameter	lux	diameter	lux	diameter	lux	diameter
White	607	4,99	152	9,97	67	14,96	52	19,94

SUPER SILENCE MODE

NATIVE CRI GREATER THAN 90

MIN ZOOM

Beam Opening

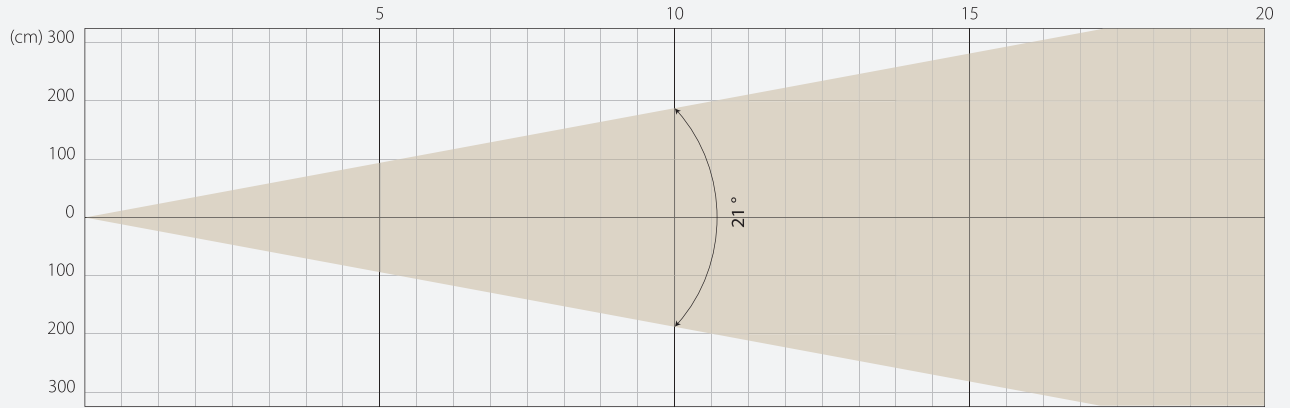


Intensity

Distance (m)	5		10		15		20	
unit	lux	diameter	lux	diameter	lux	diameter	lux	diameter
White	14689	0,61	3672	1,22	1632	1,83	918	2,45

MIDDLE ZOOM

Beam Opening

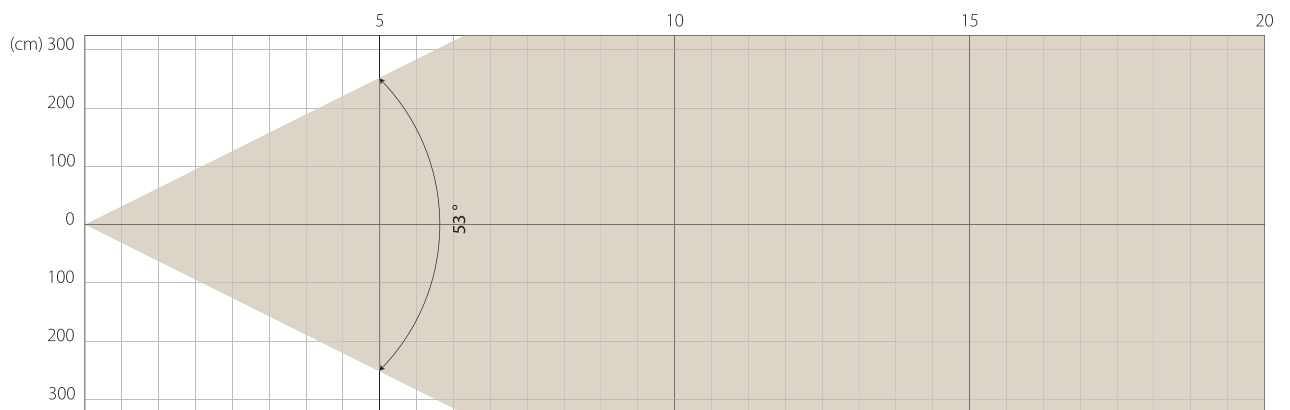


Intensity

Distance (m)	5		10		15		20	
unit	lux	diameter	lux	diameter	lux	diameter	lux	diameter
White	3072	1,85	768	3,71	341	5,56	192	7,41

MAX ZOOM

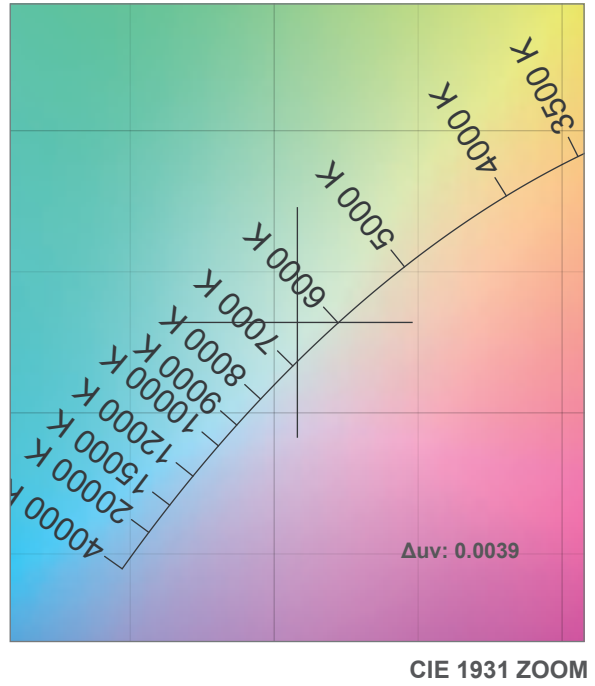
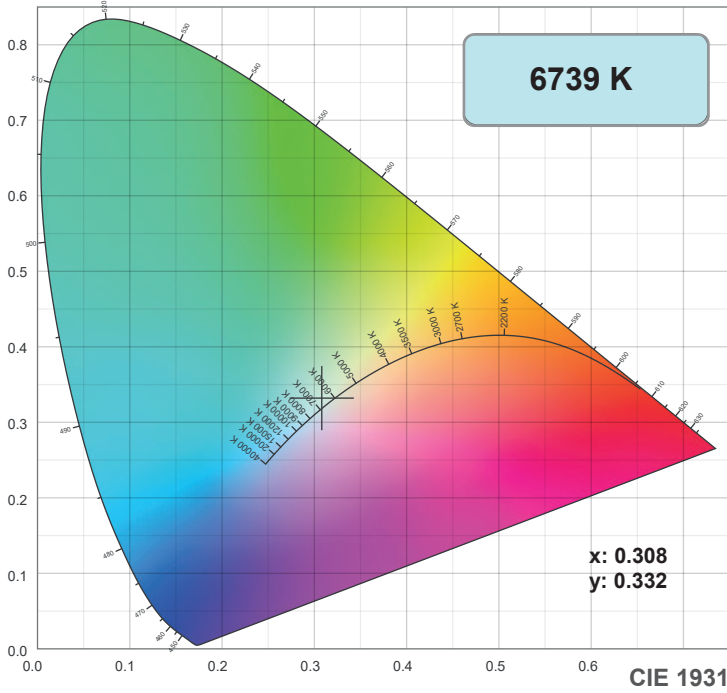
Beam Opening



Intensity

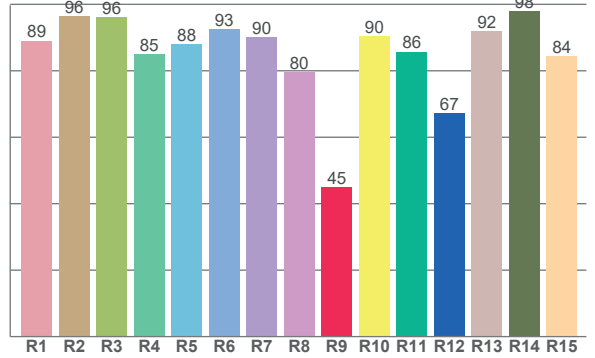
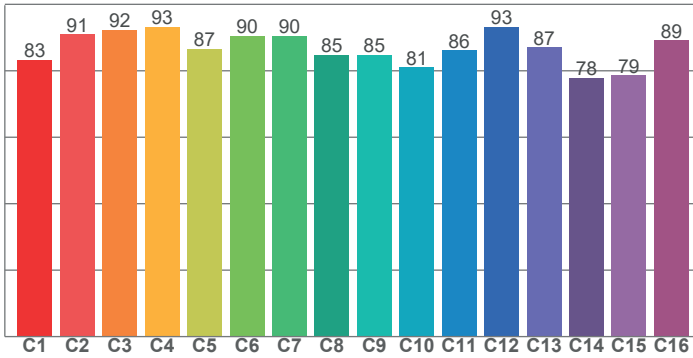
Distance (m)	5		10		15		20	
unit	lux	diameter	lux	diameter	lux	diameter	lux	diameter
White	555	4,99	139	9,97	62	14,96	35	19,94

COLOR DETAILS



TM-30: 87.1

CRI: 89.6 (R1-R8)



CRI R values, only R1-R8 are used to calculate final CRI value

R1	R2	R3	R4	R5	R6	R7	R8	R9	R10	R11	R12	R13	R14	R15
89.0	96.3	96.1	84.9	87.9	92.6	90.1	79.6	45.0	90.4	85.8	67.1	91.8	98.0	84.4

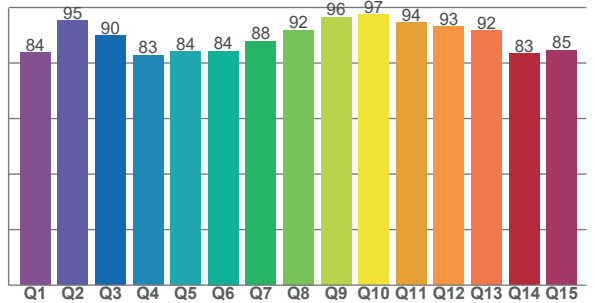
TM30 C values, 16 binned values out of total of 99 C values

C1	C2	C3	C4	C5	C6	C7	C8	C9	C10	C11	C12	C13	C14	C15	C16
83.2	91.0	92.4	93.2	86.7	90.5	90.4	84.8	84.7	81.1	86.1	93.2	87.1	77.8	78.7	89.1

CQS Q values

Q1	Q2	Q3	Q4	Q5	Q6	Q7	Q8	Q9	Q10	Q11	Q12	Q13	Q14	Q15
83.8	95.2	89.9	82.8	84.1	84.3	87.8	91.9	96.5	97.5	94.5	93.2	91.8	83.5	84.6

CQS: 88.2



Color parameters

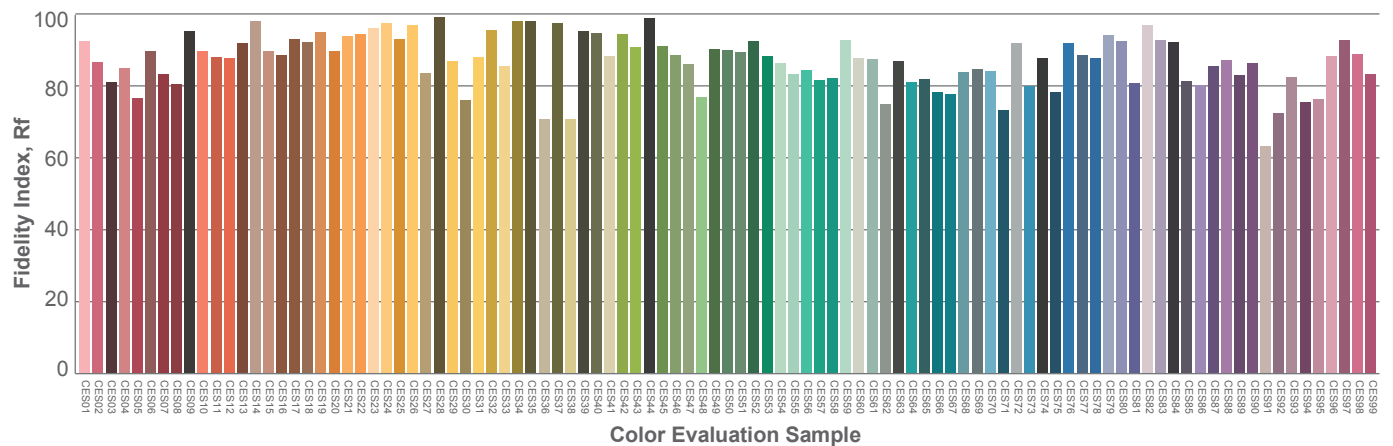
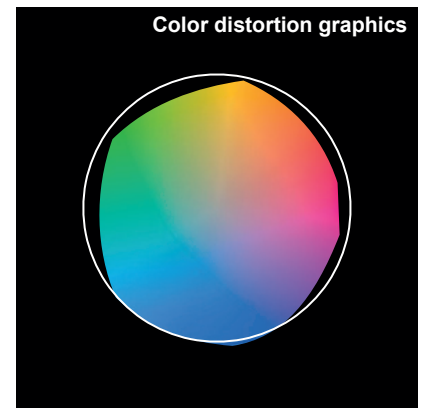
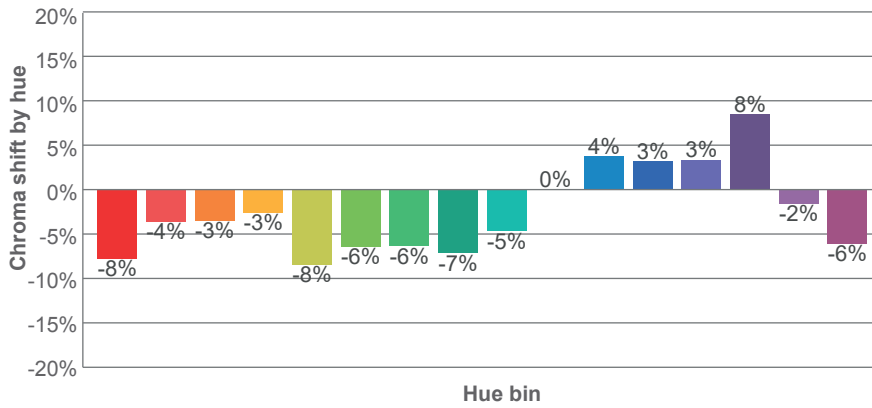
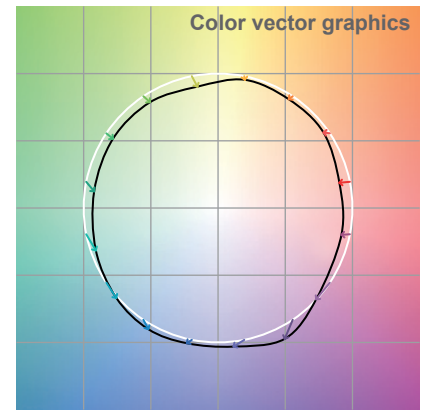
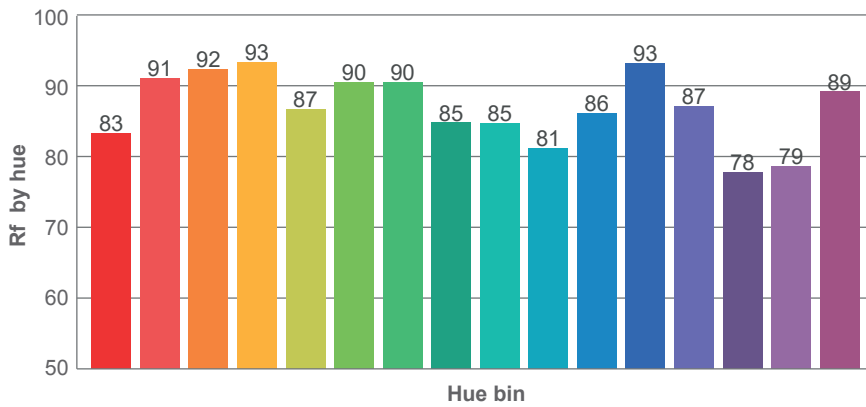
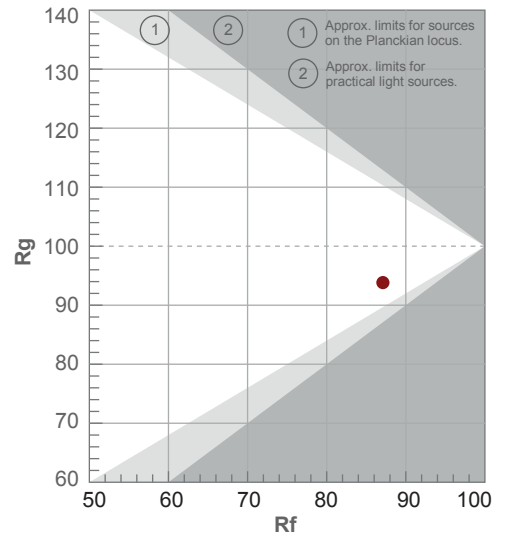
Color temperature	Color rendering index	Red component	Color fidelity	Color gamut	Color quality scale	Color coordinate cie 1931	Color coordinate cie 1931	Color coordinate	Color coordinate	Color deviation from black body
CCT	CRI	CRI R9	TM30 Rf	TM30 Rg	CQS	x	y	u	v	Δuv
6739 K	89.6	45.0	87.1	93.8	88.2	0.308	0.332	0.193	0.313	0.0039

TM-30 DETAILS

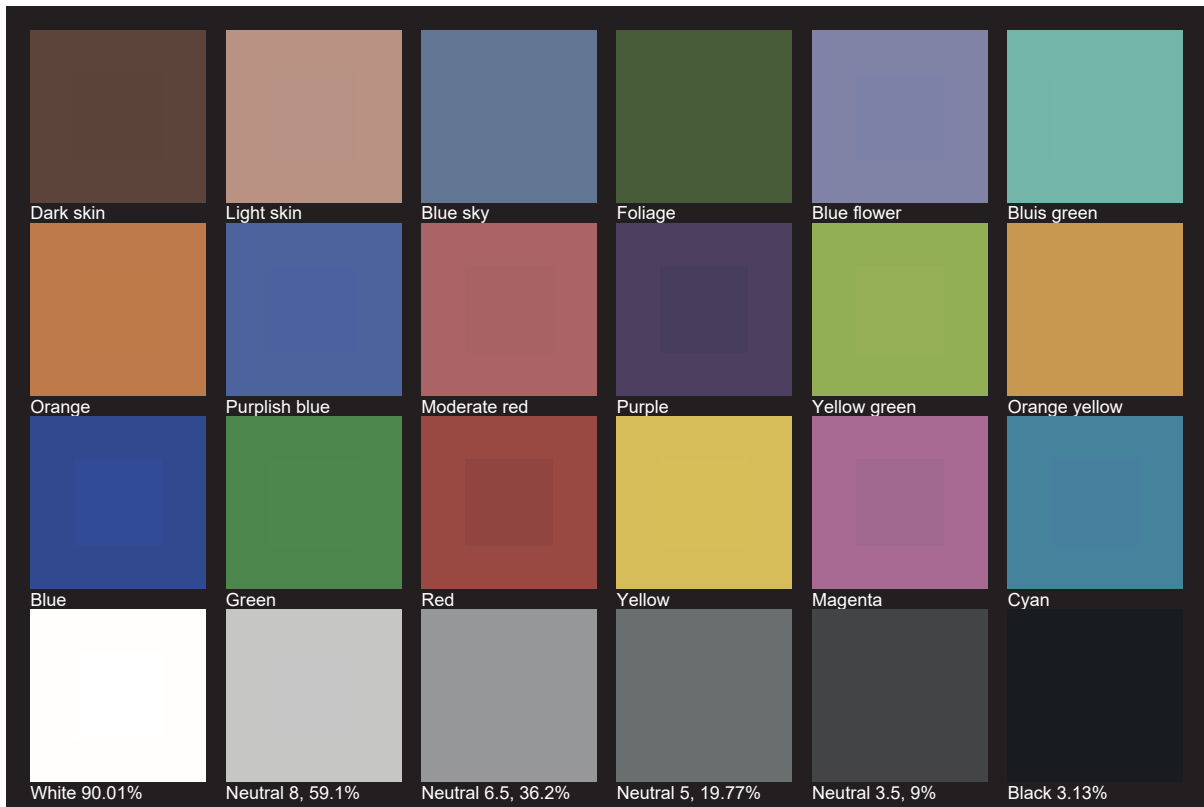
Rf 87.1
Fidelity index Rf

Rg 93.8
Gamut index Rg

Hue Bin	R _f	Shifts (%)	
		Chroma	Hue
1	83	-8%	1%
2	91	-4%	3%
3	92	-3%	1%
4	93	-3%	-1%
5	87	-8%	-3%
6	90	-6%	-2%
7	90	-6%	1%
8	85	-7%	6%
9	85	-5%	13%
10	81	0%	14%
11	86	4%	7%
12	93	3%	-3%
13	87	3%	-9%
14	78	8%	-13%
15	79	-2%	-16%
16	89	-6%	-2%



TLCI 90





AYRTON

Digital Lighting