



LEVANTE TC

PHOTOMETRY



AYRTON
Digital Lighting



Total Flux	14599 lm (@zoom 128, integrating sphere measurement, Fan mode auto)
-------------------	---

CCT @LED engin	7000 (±500K)
CCT @open	6500 (±500K)
Ra @open	90 (±2)
TLCI	91
TM-30	Rf: 87.4 Rg: 94.4

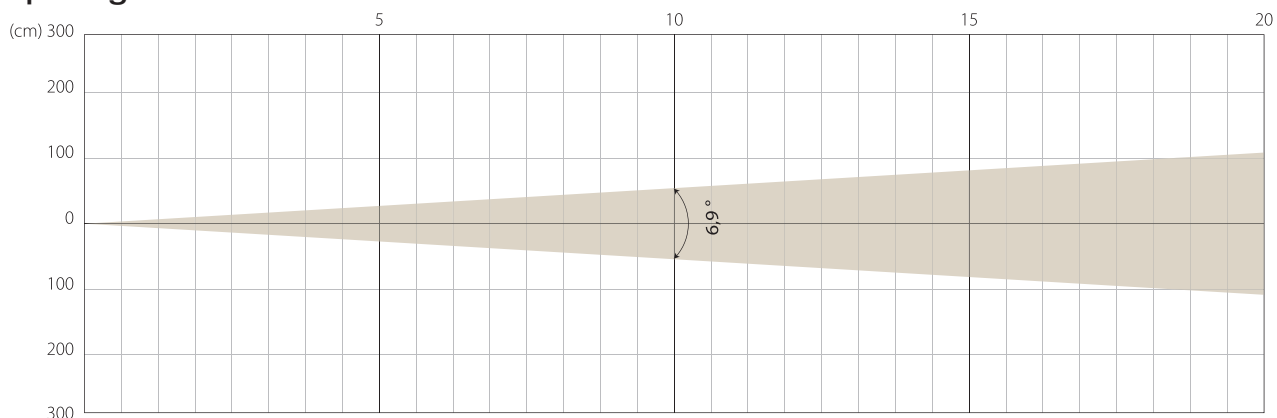
Fan Mode	Noise Level (dBA)	by Goniometer (lm)	by Sphere (lm)
Auto	44,7	11945	14285
Stage	49,1	12037	14599
Silence	38,7	7737	11610
Super Silence	34,8	6484	7834

Note: noise measured @1m distance, static status, ambient 31 dBA.

Voltage / Power	100-240V, 50-60HZ	550 W
Fixture Dimension / Weight	365 x 632 x 212 mm	22 kg
Packing Dimension / Weight	445 x 750 x 295 mm	30.5 kg

MIN ZOOM

Beam Opening

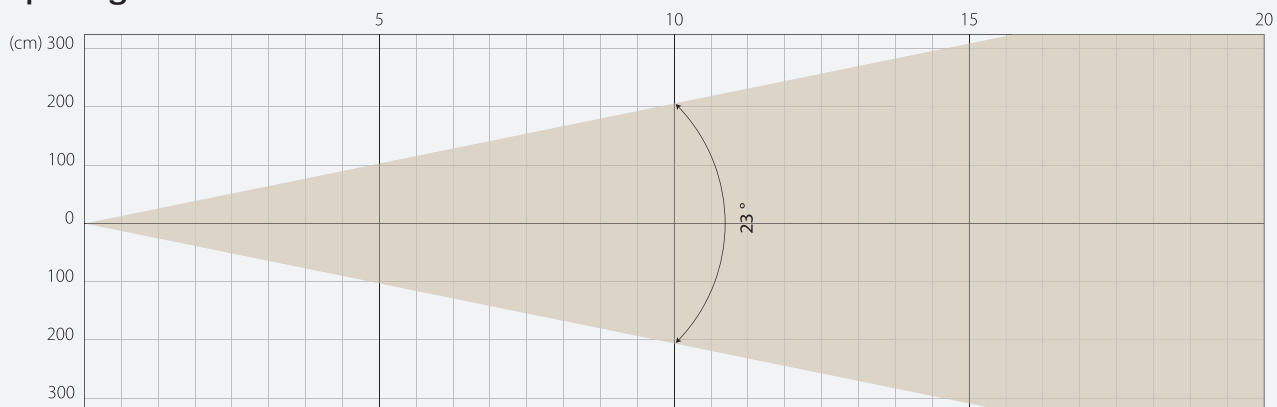


Intensity

Distance (m)	5		10		15		20	
unit	lux	diameter	lux	diameter	lux	diameter	lux	diameter
White	33204	0,6	8301	1,21	3689	1,81	2075	2,41

MIDDLE ZOOM

Beam Opening

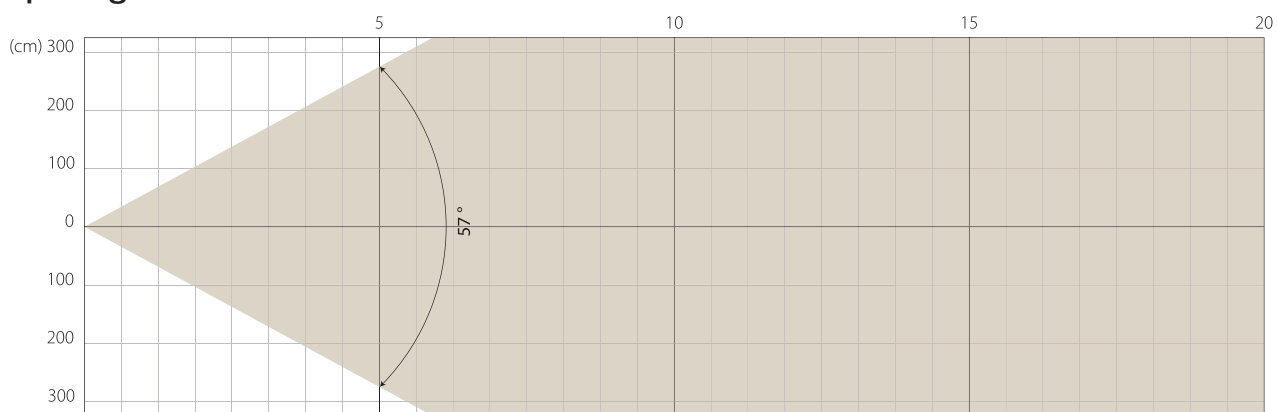


Intensity

Distance (m)	5		10		15		20	
unit	lux	diameter	lux	diameter	lux	diameter	lux	diameter
White	4691	2,03	1173	4,07	521	6,1	293	8,14

MAX ZOOM

Beam Opening



Intensity

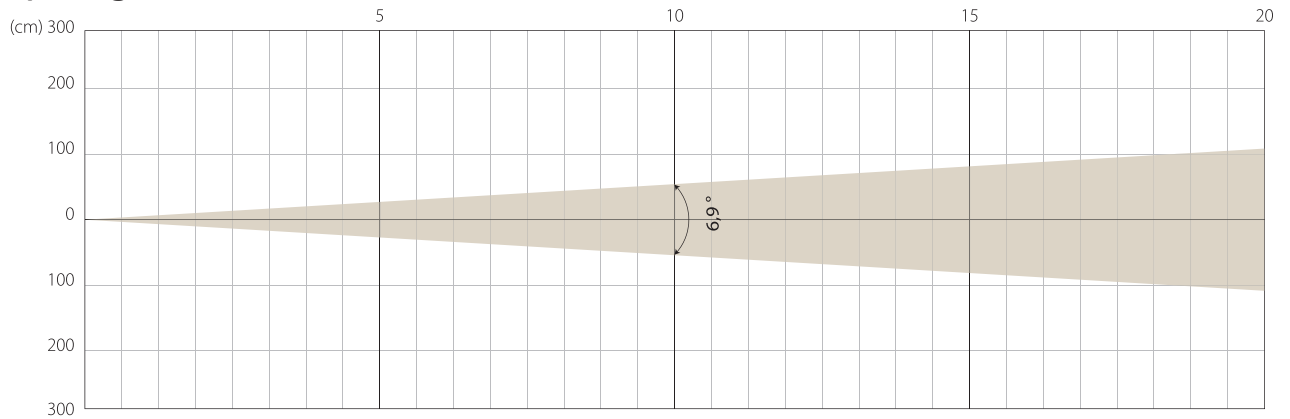
Distance (m)	5		10		15		20	
unit	lux	diameter	lux	diameter	lux	diameter	lux	diameter
White	783	5,43	196	10,86	87	16,29	49	21,72

STAGE MODE

NATIVE CRI GREATER THAN 90

MIN ZOOM

Beam Opening

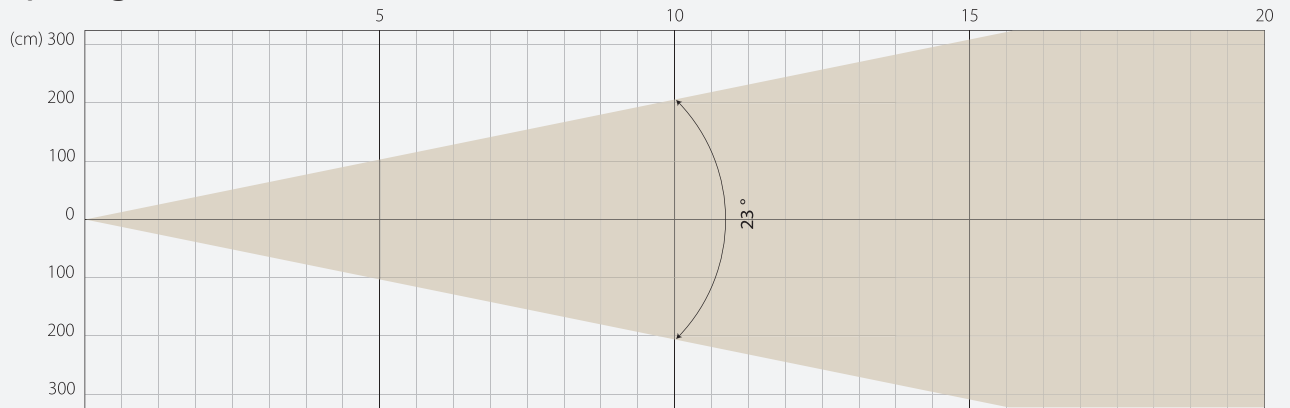


Intensity

Distance (m)	5		10		15		20	
unit	lux	diameter	lux	diameter	lux	diameter	lux	diameter
White	33827	0,6	8457	1,21	3759	1,81	2114	2,41

MIDDLE ZOOM

Beam Opening

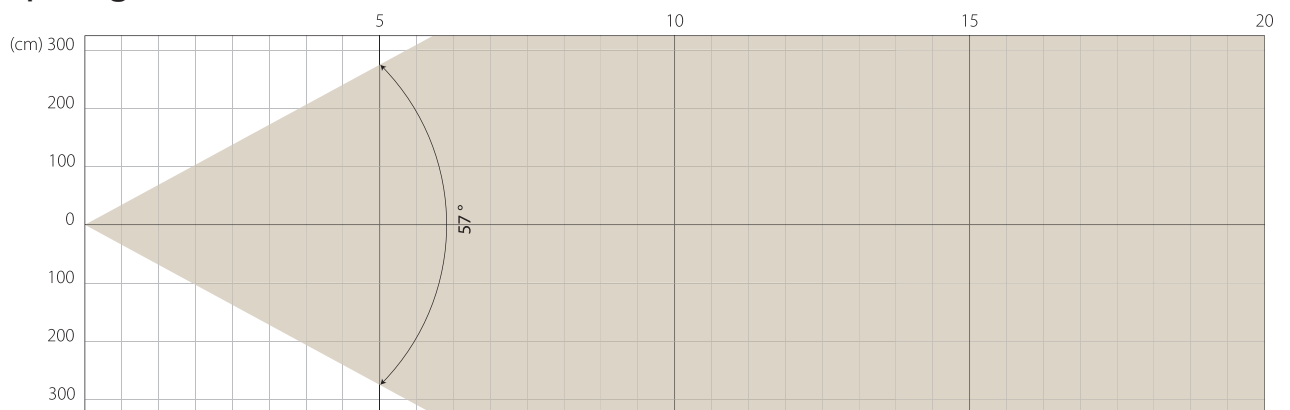


Intensity

Distance (m)	5		10		15		20	
unit	lux	diameter	lux	diameter	lux	diameter	lux	diameter
White	4767	2,03	1192	4,07	530	6,1	298	8,14

MAX ZOOM

Beam Opening

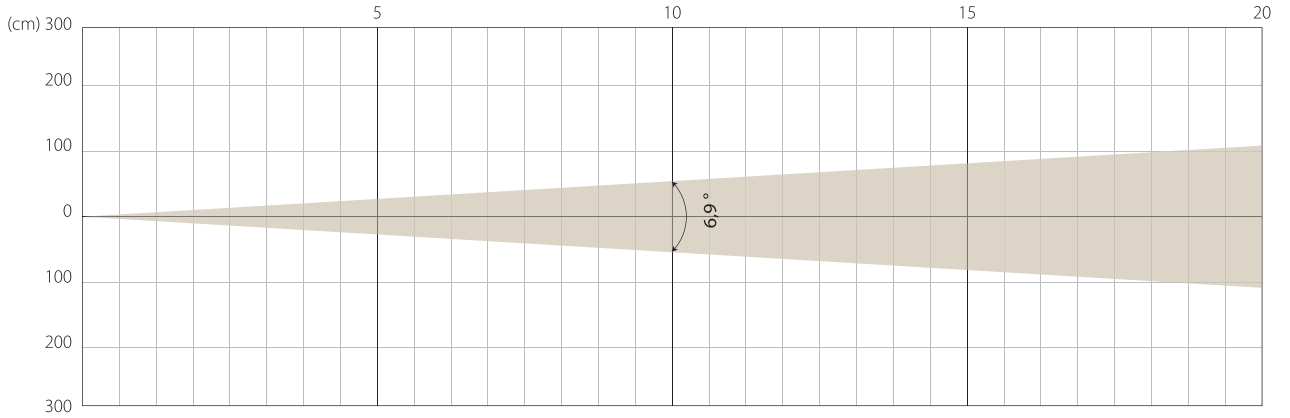


Intensity

Distance (m)	5		10		15		20	
unit	lux	diameter	lux	diameter	lux	diameter	lux	diameter
White	796	5,43	199	10,86	88	16,29	50	21,72

MIN ZOOM

Beam Opening

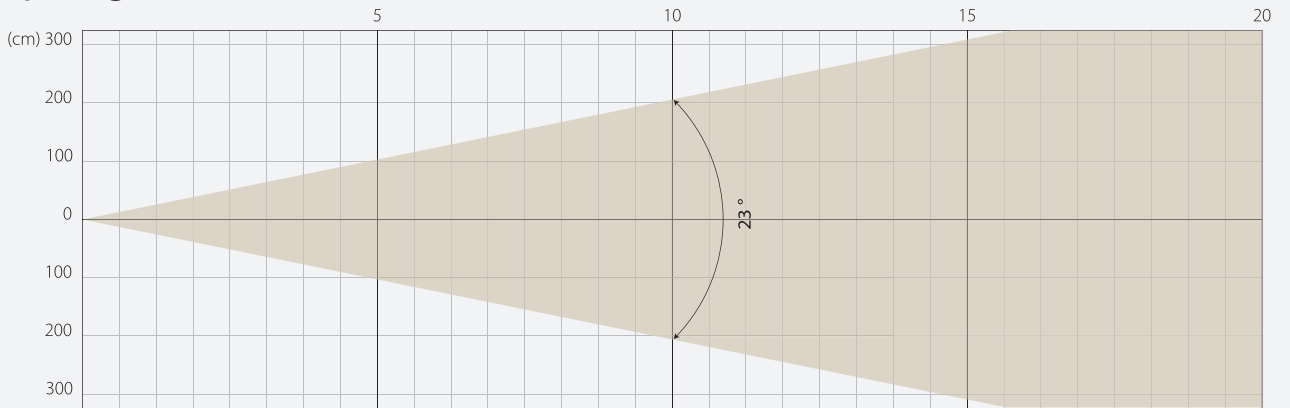


Intensity

Distance (m)	5		10		15		20	
unit	lux	diameter	lux	diameter	lux	diameter	lux	diameter
White	21257	0,6	5314	1,21	2362	1,81	1329	2,41

MIDDLE ZOOM

Beam Opening

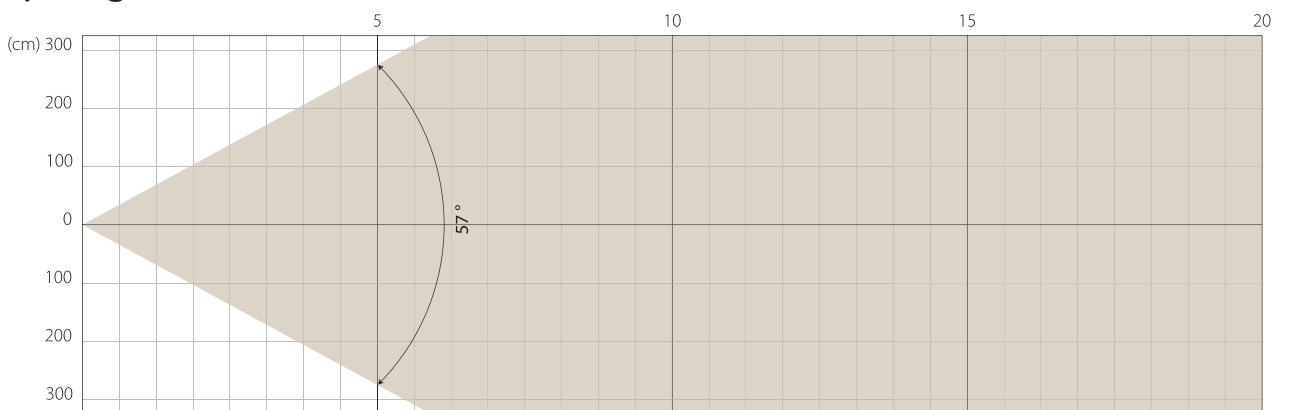


Intensity

Distance (m)	5		10		15		20	
unit	lux	diameter	lux	diameter	lux	diameter	lux	diameter
White	3008	2,03	752	4,07	334	6,1	188	8,14

MAX ZOOM

Beam Opening



Intensity

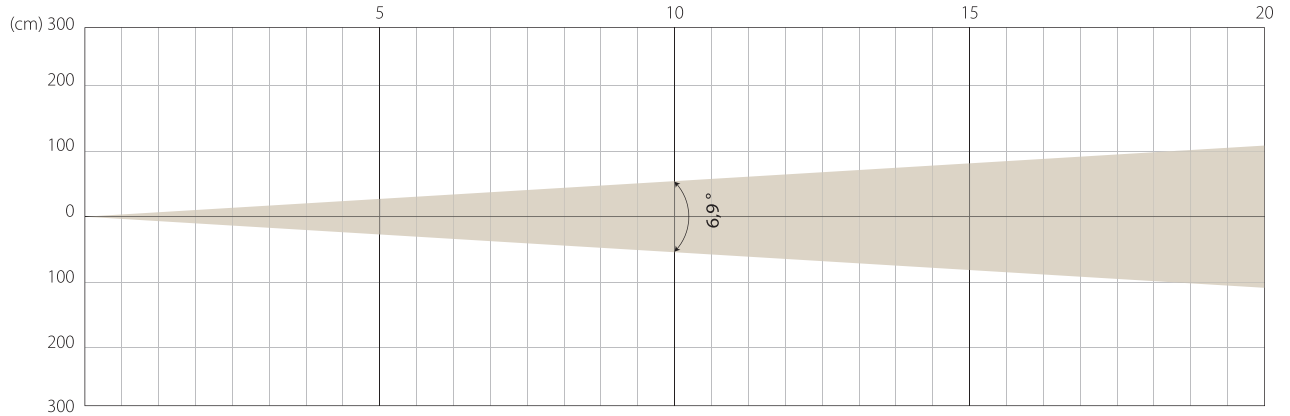
Distance (m)	5		10		15		20	
unit	lux	diameter	lux	diameter	lux	diameter	lux	diameter
White	501	5,43	125	10,86	56	16,29	31	21,72

SUPER SILENCE MODE

NATIVE CRI GREATER THAN 90

MIN ZOOM

Beam Opening

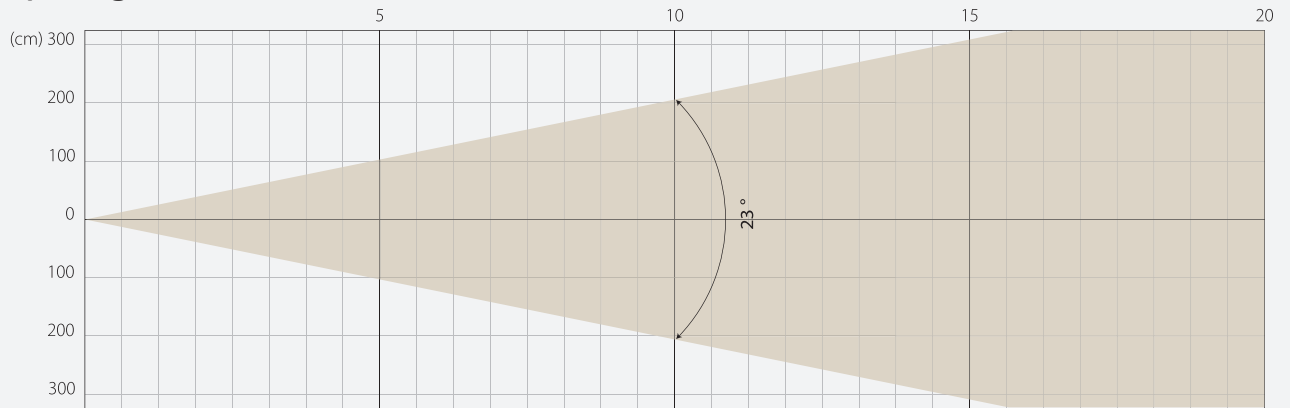


Intensity

Distance (m)	5		10		15		20	
unit	lux	diameter	lux	diameter	lux	diameter	lux	diameter
White	17796	0,6	4449	1,21	1977	1,81	1112	2,41

MIDDLE ZOOM

Beam Opening

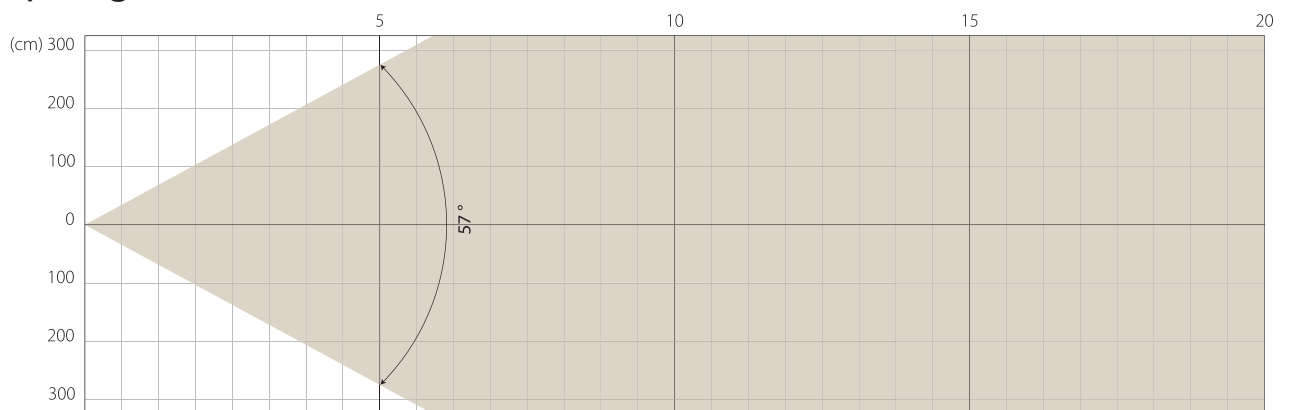


Intensity

Distance (m)	5		10		15		20	
unit	lux	diameter	lux	diameter	lux	diameter	lux	diameter
White	2512	2,03	628	4,07	279	6,1	157	8,14

MAX ZOOM

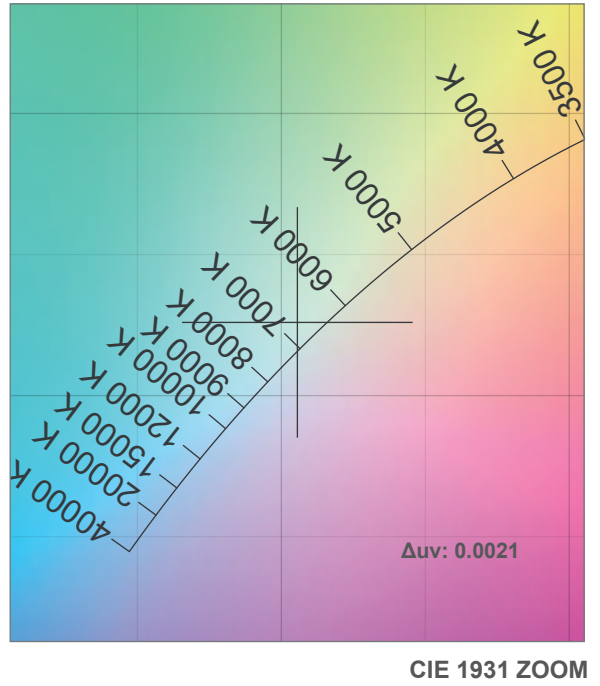
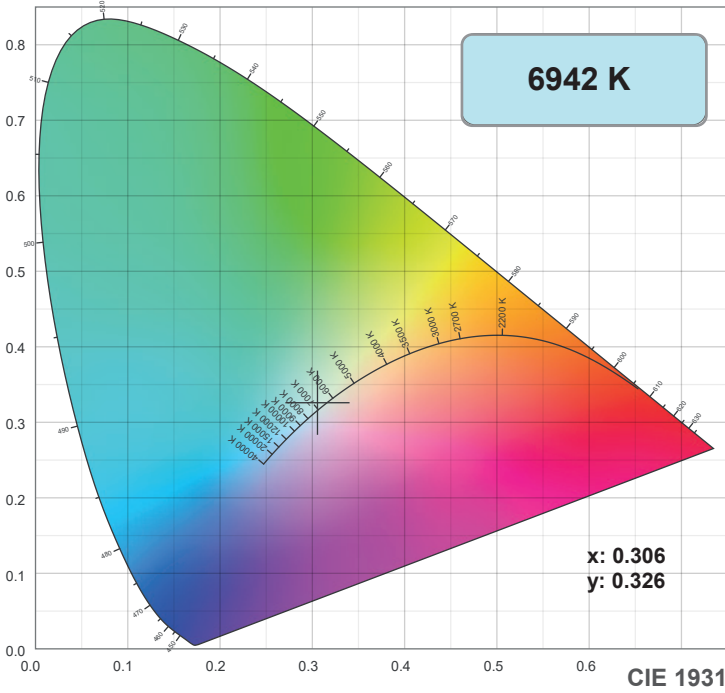
Beam Opening



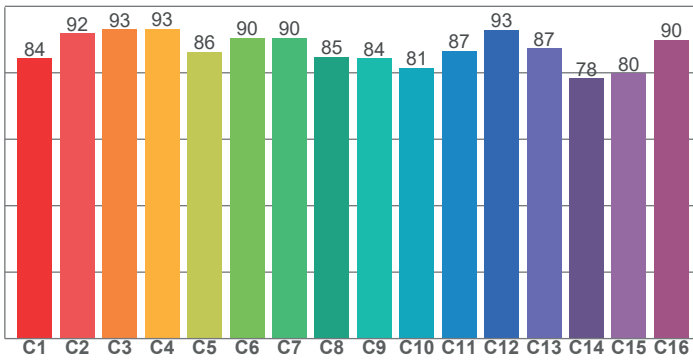
Intensity

Distance (m)	5		10		15		20	
unit	lux	diameter	lux	diameter	lux	diameter	lux	diameter
White	419	5,43	105	10,86	47	16,29	26	21,72

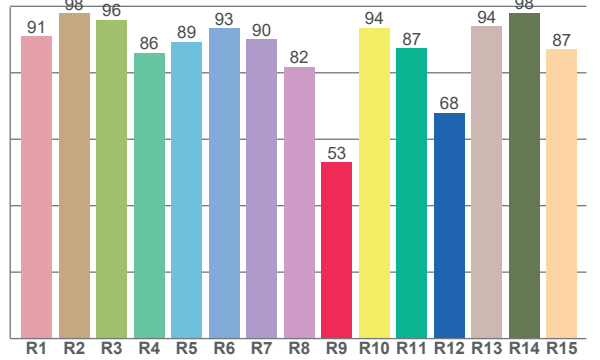
COLOR DETAILS



TM-30: 87.4



CRI: 90.7 (R1-R8)



CRI R values, only R1-R8 are used to calculate final CRI value

R1	R2	R3	R4	R5	R6	R7	R8	R9	R10	R11	R12	R13	R14	R15
91.1	97.9	96.0	86.0	89.4	93.3	90.2	81.9	53.2	93.5	87.4	68.0	94.1	98.1	87.0

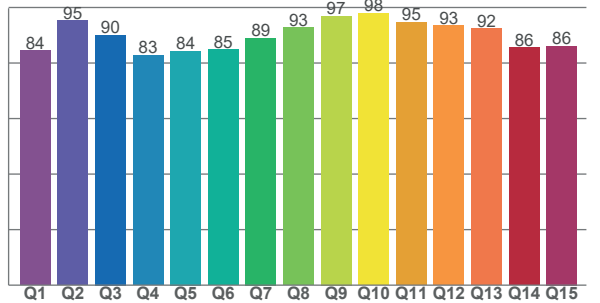
TM30 C values, 16 binned values out of total of 99 C values

C1	C2	C3	C4	C5	C6	C7	C8	C9	C10	C11	C12	C13	C14	C15	C16
84.4	91.9	93.1	93.2	86.2	90.4	90.4	84.7	84.4	81.4	86.6	93.0	87.4	78.3	79.8	90.0

CQS Q values

Q1	Q2	Q3	Q4	Q5	Q6	Q7	Q8	Q9	Q10	Q11	Q12	Q13	Q14	Q15
84.4	95.2	90.1	82.8	84.3	84.9	89.0	92.7	96.9	97.9	94.7	93.5	92.3	85.5	86.1

CQS: 88.9



Color parameters

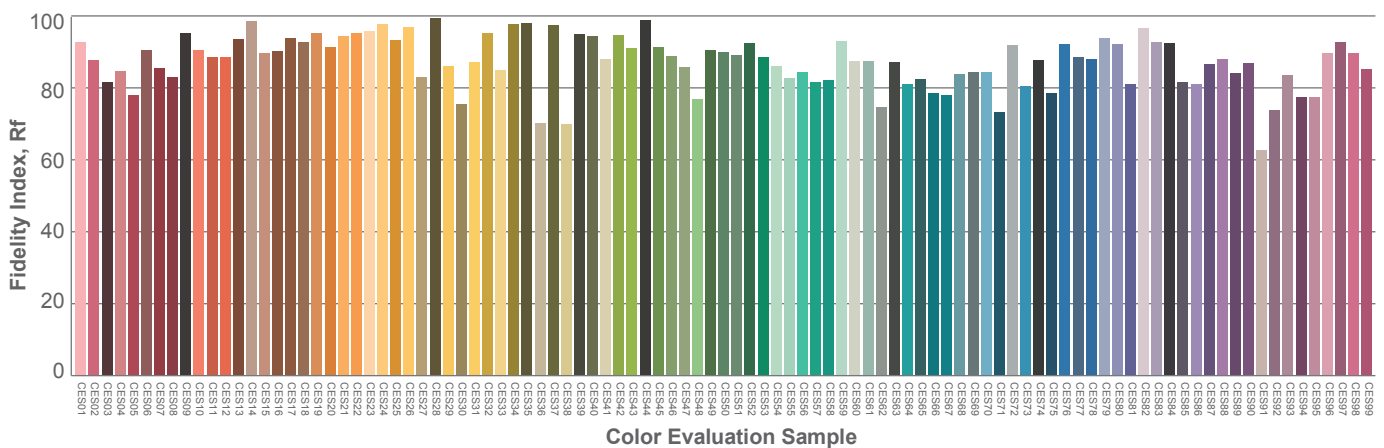
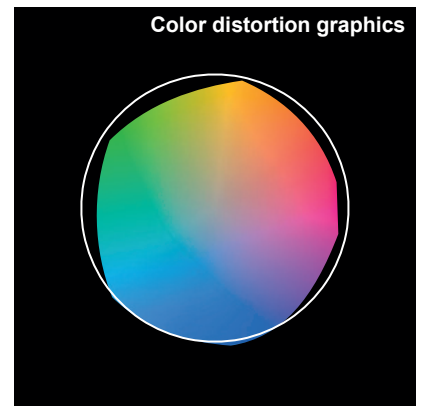
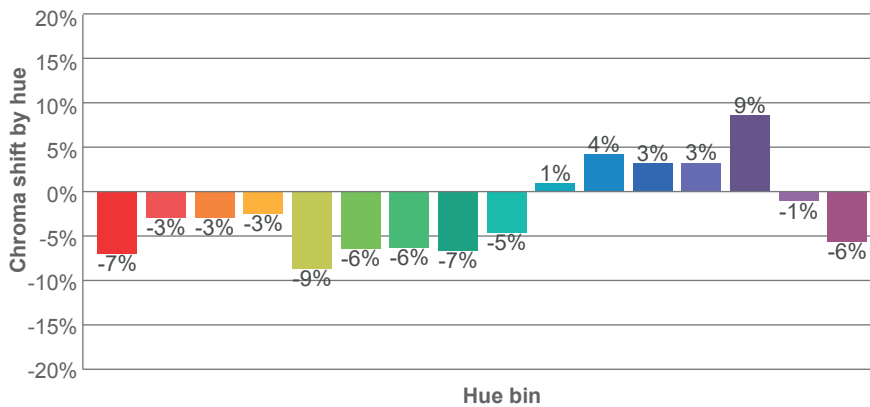
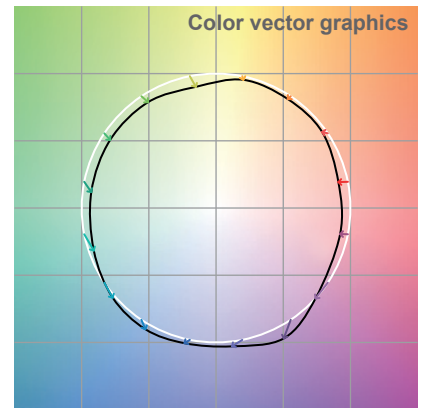
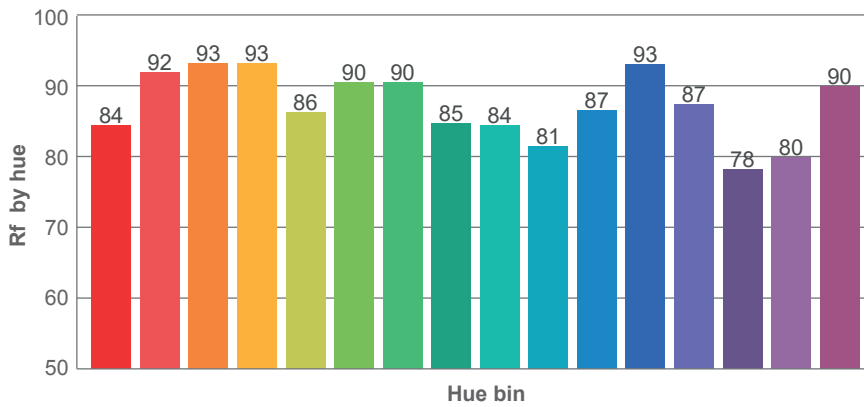
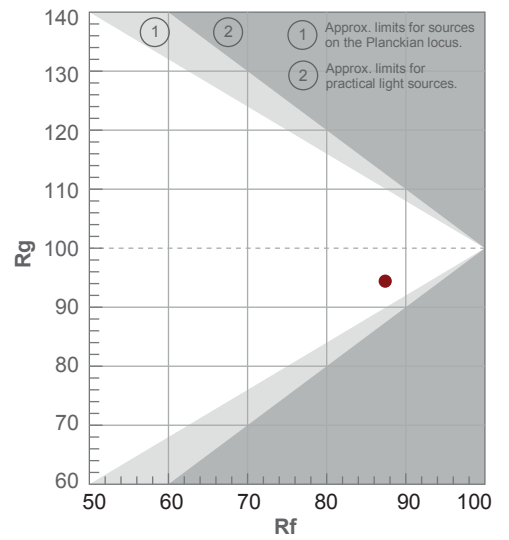
Color temperature	Color rendering index	Red component	Color fidelity	Color gamut	Color quality scale	Color coordinate cie 1931	Color coordinate cie 1931	Color coordinate	Color coordinate	Color deviation from black body
CCT	CRI	CRI R9	TM30 Rf	TM30 Rg	CQS	x	y	u	v	Δuv
6942 K	90.7	53.2	87.4	94.4	88.9	0.306	0.326	0.194	0.310	0.0021

TM-30 DETAILS

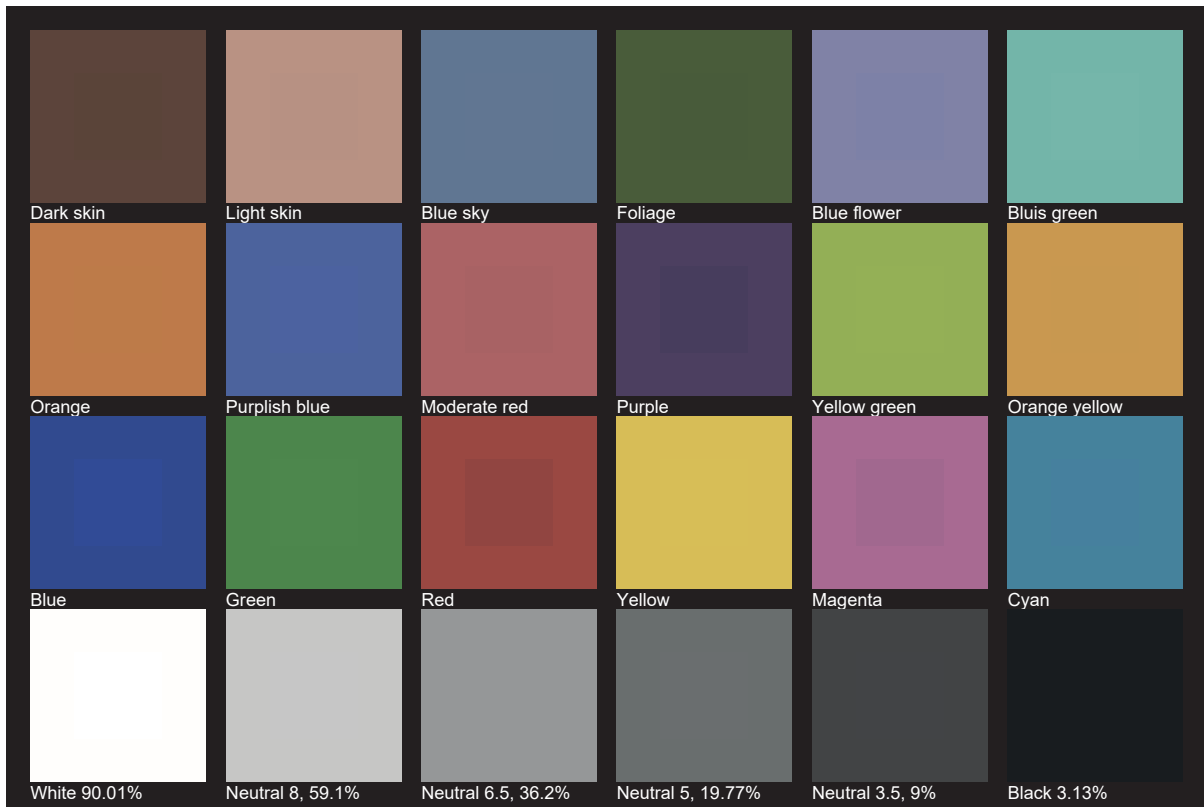
Rf 87.4
Fidelity index Rf

Rg 94.4
Gamut index Rg

Hue Bin	R _f	Shifts (%)	
		Chroma	Hue
1	84	-7%	1%
2	92	-3%	3%
3	93	-3%	1%
4	93	-3%	-1%
5	86	-9%	-3%
6	90	-6%	-2%
7	90	-6%	2%
8	85	-7%	6%
9	84	-5%	13%
10	81	1%	13%
11	87	4%	6%
12	93	3%	-3%
13	87	3%	-8%
14	78	9%	-12%
15	80	-1%	-15%
16	90	-6%	-1%



TLCI 91





AYRTON

Digital Lighting