



PERSEO PROFILE S

PHOTOMETRY



AYRTON
Digital Lighting



Total Flux	30425 lm (@zoom 128, integrating sphere measurement, Fan mode auto)
-------------------	---

CCT @LED engin	8200 (±500K)
CCT @open	6900 (±500K)
Ra @open	70 (±2)
TLCI	46
TM-30	Rf: 79.9 Rg: 94.1

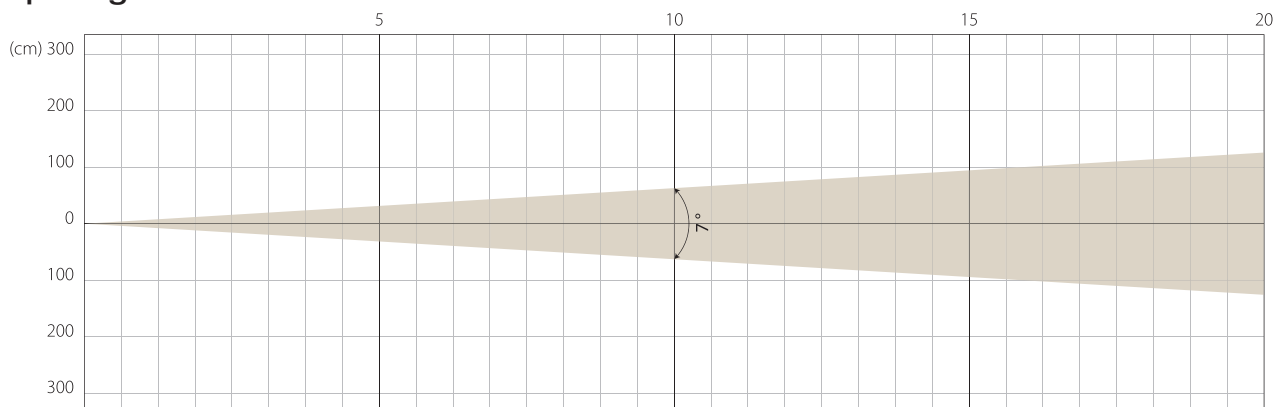
Fan Mode	Noise Level (dBA)	by Goniometer (lm)	by Sphere (lm)
Auto	44,9	25367	30366
Stage	47,1	26203	30425
Silence	39,9	20533	24351
Super Silence	34,9	15849	16623

Note: noise measured @1m distance, static status, ambient 31 dBA.

Voltage / Power	100-240V, 50-60Hz	800 W
Fixture Dimension / Weight	490 x 710 x 330 mm	38.8 kg
Packing Dimension / Weight	660 x 675 x 560 mm	58 kg

MIN ZOOM

Beam Opening

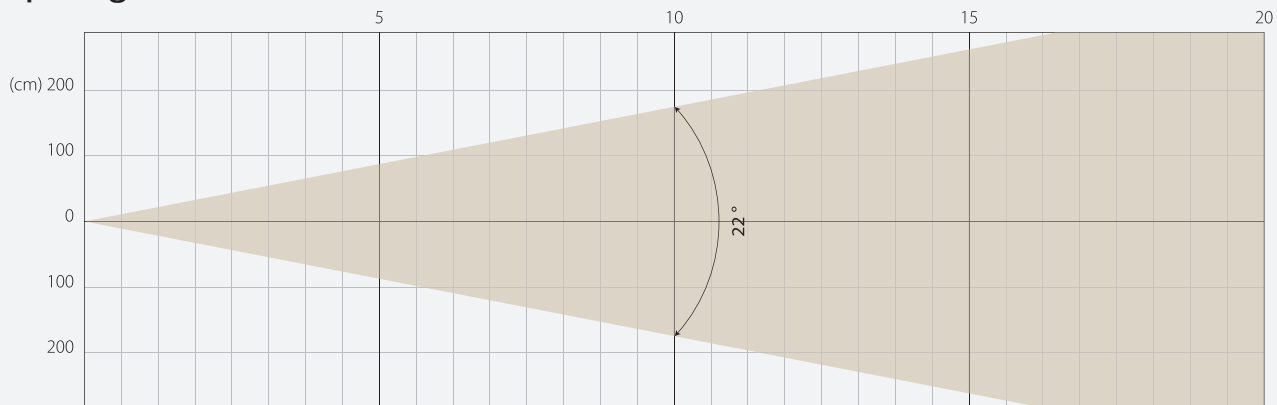


Intensity

Distance (m)	5		10		15		20	
unit	lux	diameter	lux	diameter	lux	diameter	lux	diameter
White	57373	0,61	14343	1,22	6375	1,83	3586	2,45

MIDDLE ZOOM

Beam Opening

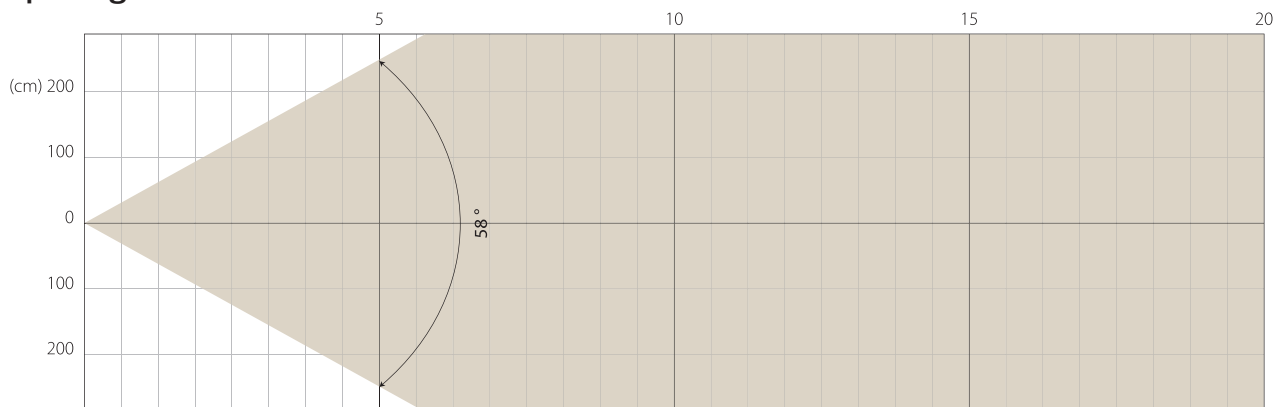


Intensity

Distance (m)	5		10		15		20	
unit	lux	diameter	lux	diameter	lux	diameter	lux	diameter
White	8022	1,94	2005	3,89	891	5,83	501	7,78

MAX ZOOM

Beam Opening



Intensity

Distance (m)	5		10		15		20	
unit	lux	diameter	lux	diameter	lux	diameter	lux	diameter
White	1350	5,54	337	11,09	150	16,63	84	22,17

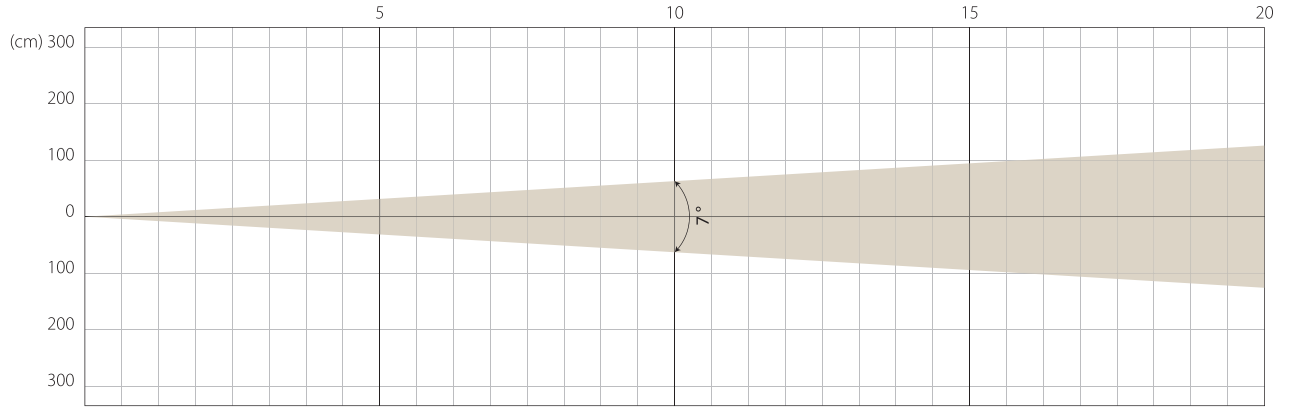
Note: Measurement done with Goniometer

STAGE MODE

NATIVE CRI GREATER THAN 70

MIN ZOOM

Beam Opening

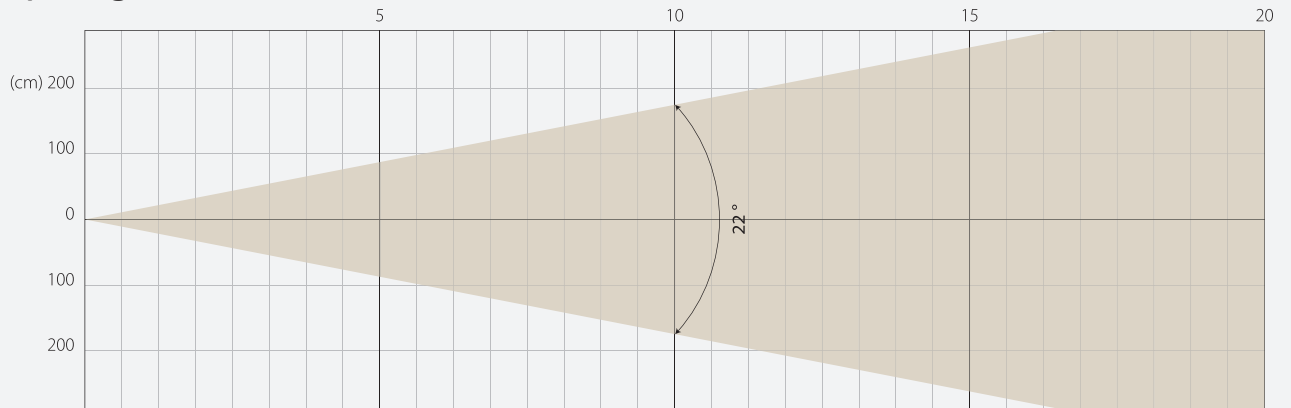


Intensity

Distance (m)	5		10		15		20	
unit	lux	diameter	lux	diameter	lux	diameter	lux	diameter
White	59045	0,61	14761	1,22	6561	1,83	3690	2,45

MIDDLE ZOOM

Beam Opening

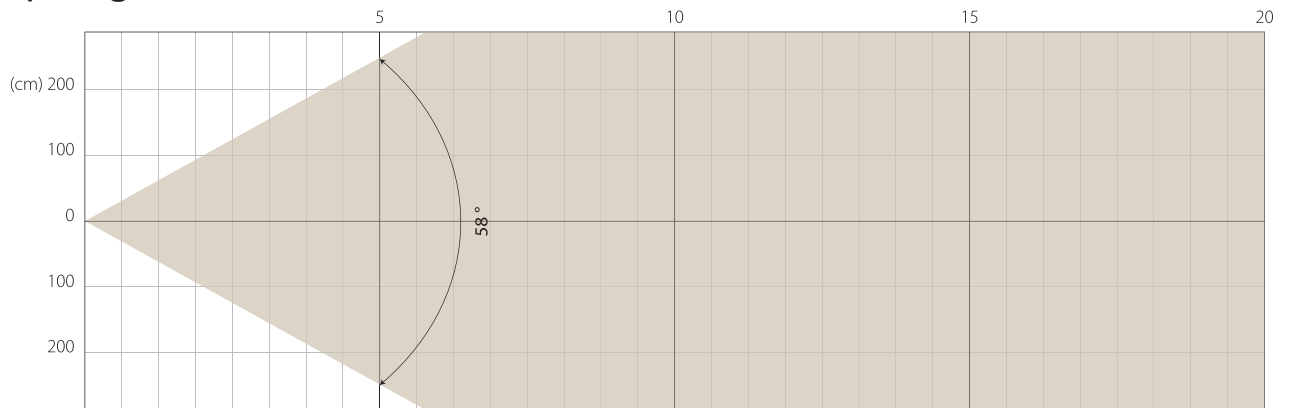


Intensity

Distance (m)	5		10		15		20	
unit	lux	diameter	lux	diameter	lux	diameter	lux	diameter
White	8343	1,94	2086	3,89	927	5,83	521	7,78

MAX ZOOM

Beam Opening



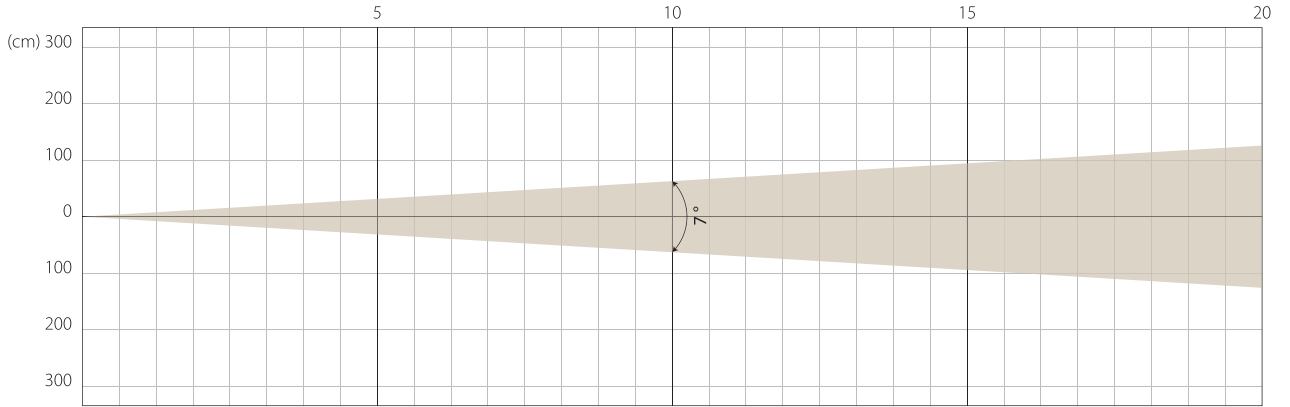
Intensity

Distance (m)	5		10		15		20	
unit	lux	diameter	lux	diameter	lux	diameter	lux	diameter
White	1402	5,54	351	11,09	156	16,63	88	22,17

Note: Measurement done with Goniometer

MIN ZOOM

Beam Opening

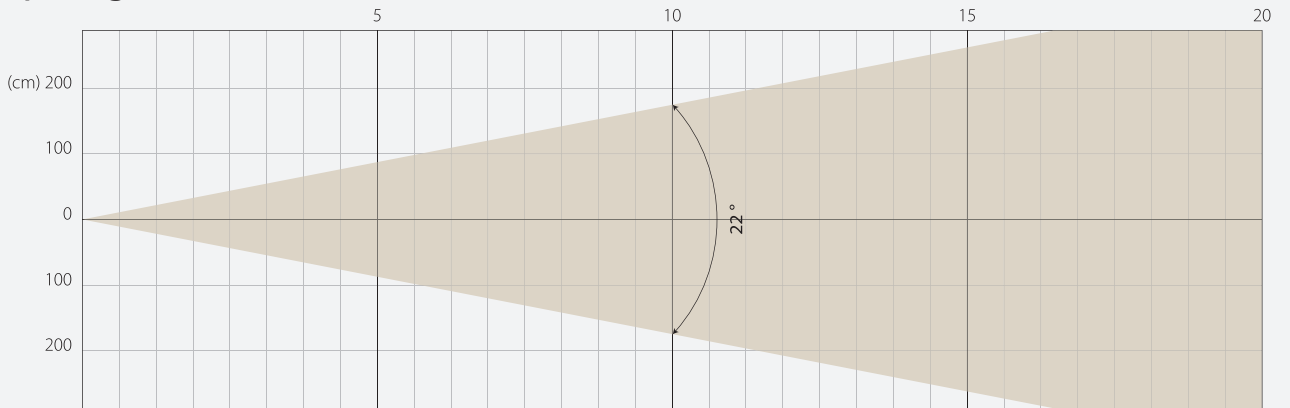


Intensity

Distance (m)	5		10		15		20	
unit	lux	diameter	lux	diameter	lux	diameter	lux	diameter
White	45715	0,61	11429	1,22	5079	1,83	2857	2,45

MIDDLE ZOOM

Beam Opening

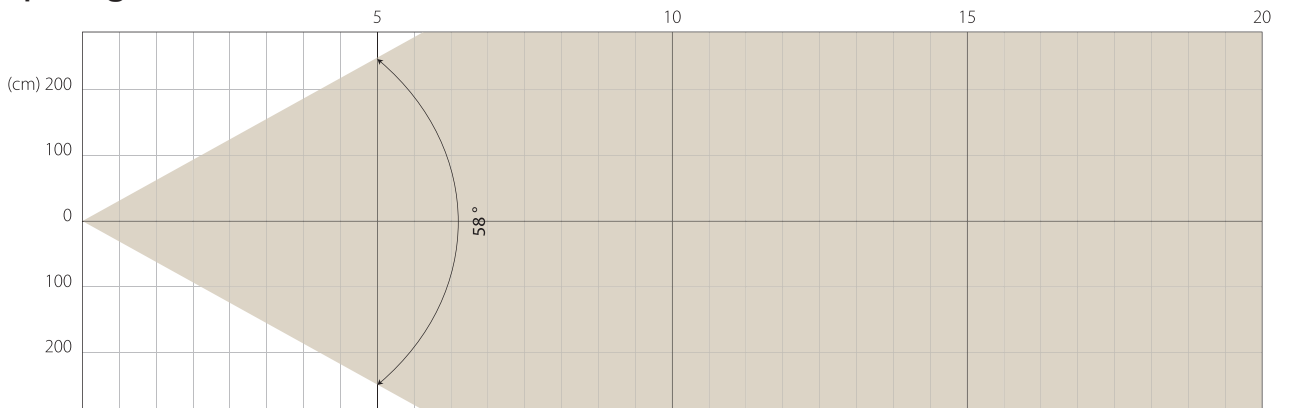


Intensity

Distance (m)	5		10		15		20	
unit	lux	diameter	lux	diameter	lux	diameter	lux	diameter
White	6470	1,94	1617	3,89	719	5,83	404	7,78

MAX ZOOM

Beam Opening



Intensity

Distance (m)	5		10		15		20	
unit	lux	diameter	lux	diameter	lux	diameter	lux	diameter
White	1088	5,54	272	11,09	121	16,63	68	22,17

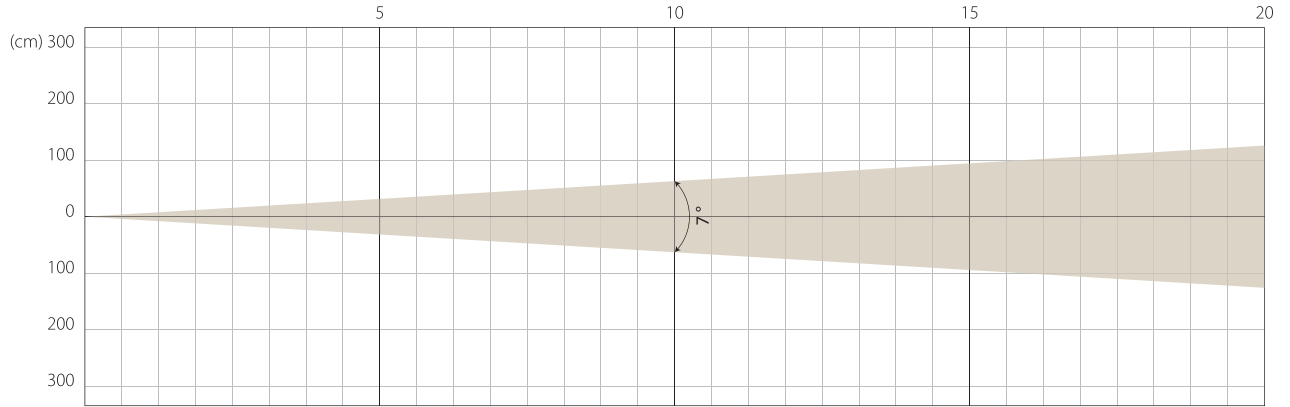
Note: Measurement done with Goniometer

SUPER SILENCE MODE

NATIVE CRI GREATER THAN 70

MIN ZOOM

Beam Opening

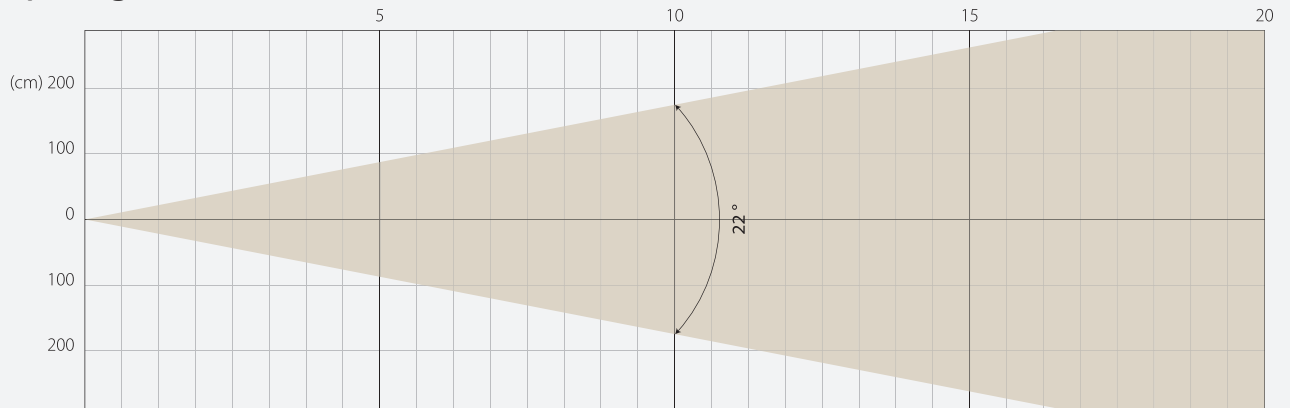


Intensity

Distance (m)	5		10		15		20	
unit	lux	diameter	lux	diameter	lux	diameter	lux	diameter
White	35316	0,61	8829	1,22	3924	1,83	2207	2,45

MIDDLE ZOOM

Beam Opening

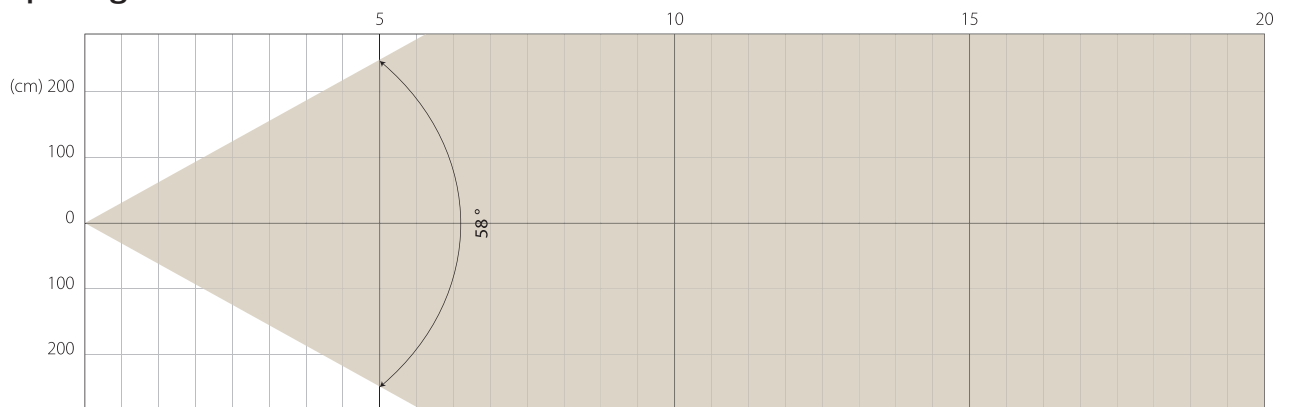


Intensity

Distance (m)	5		10		15		20	
unit	lux	diameter	lux	diameter	lux	diameter	lux	diameter
White	4999	1,94	1250	3,89	555	5,83	312	7,78

MAX ZOOM

Beam Opening

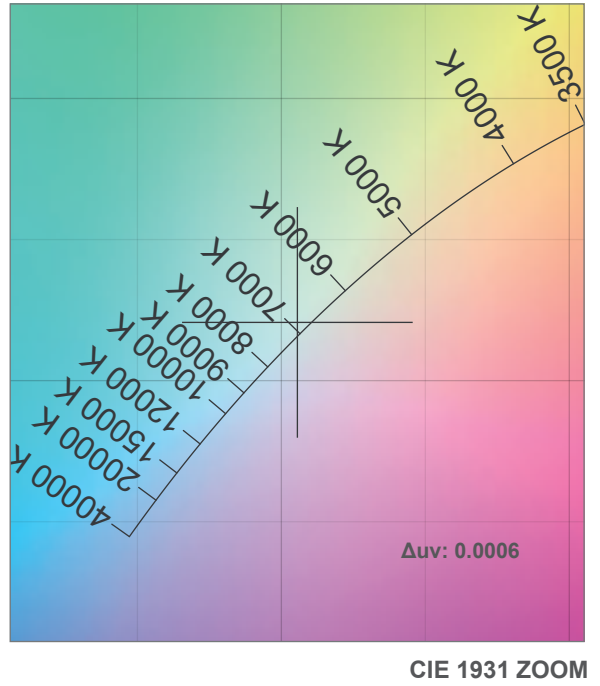
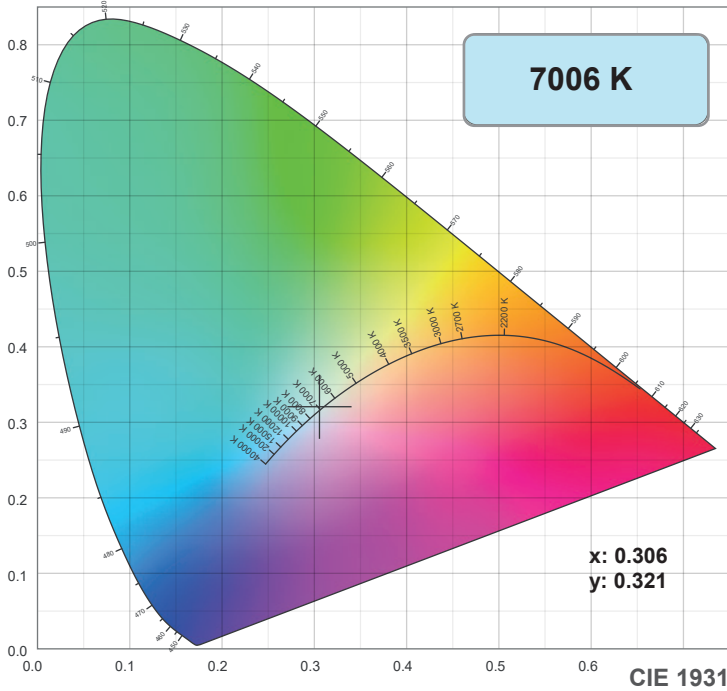


Intensity

Distance (m)	5		10		15		20	
unit	lux	diameter	lux	diameter	lux	diameter	lux	diameter
White	840	5,54	210	11,09	93	16,63	53	22,17

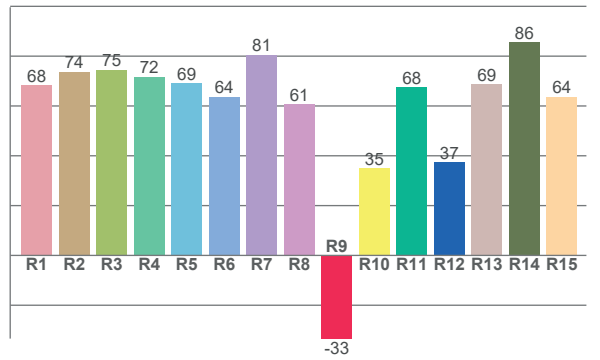
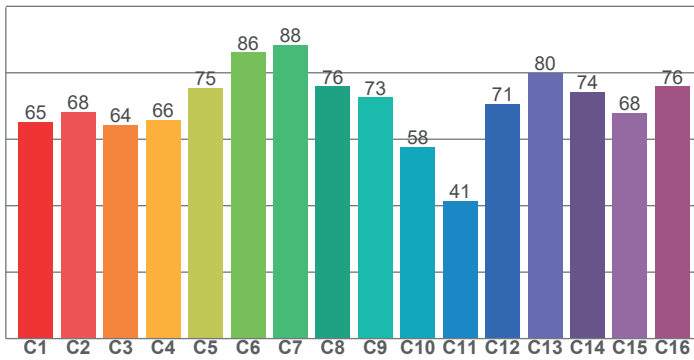
Note: Measurement done with Goniometer

COLOR DETAILS



TM-30: 70.6

CRI: 70.3 (R1-R8)



CRI R values, only R1-R8 are used to calculate final CRI value

R1	R2	R3	R4	R5	R6	R7	R8	R9	R10	R11	R12	R13	R14	R15
68.2	73.8	74.5	71.7	69.2	63.7	80.6	60.7	-33.4	34.9	67.6	37.4	68.8	85.5	63.7

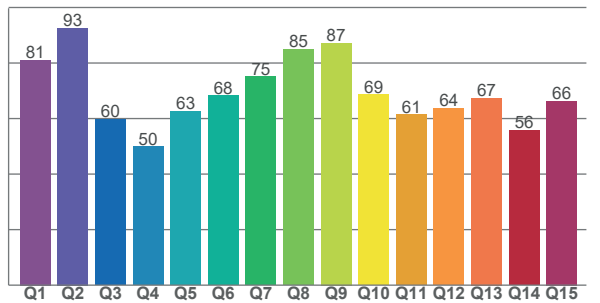
TM30 C values, 16 binned values out of total of 99 C values

C1	C2	C3	C4	C5	C6	C7	C8	C9	C10	C11	C12	C13	C14	C15	C16
65.2	68.2	64.4	65.8	75.4	86.2	88.4	76.0	72.6	57.7	41.5	70.7	80.0	74.2	67.9	75.8

CQS Q values

Q1	Q2	Q3	Q4	Q5	Q6	Q7	Q8	Q9	Q10	Q11	Q12	Q13	Q14	Q15
81.1	92.6	59.7	49.8	62.6	68.3	75.1	84.9	87.2	68.7	61.4	63.7	67.4	55.8	66.3

CQS: 67.4



Color parameters

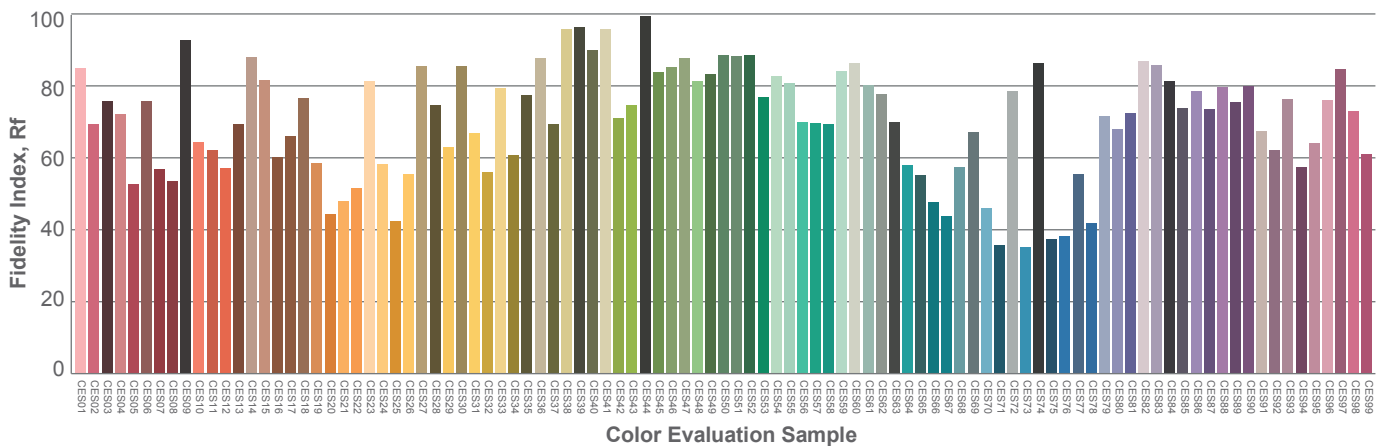
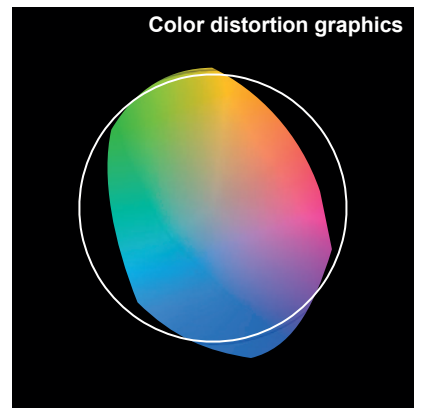
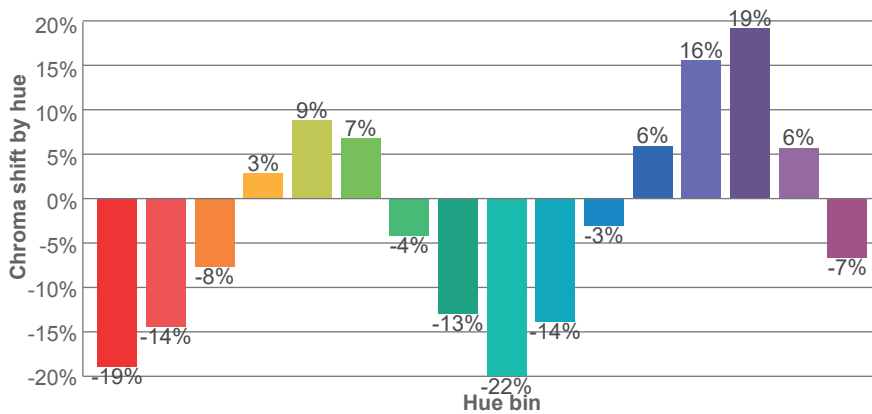
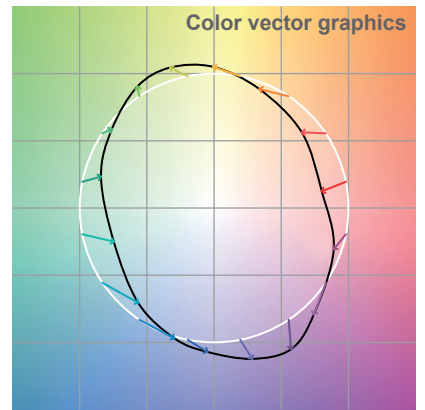
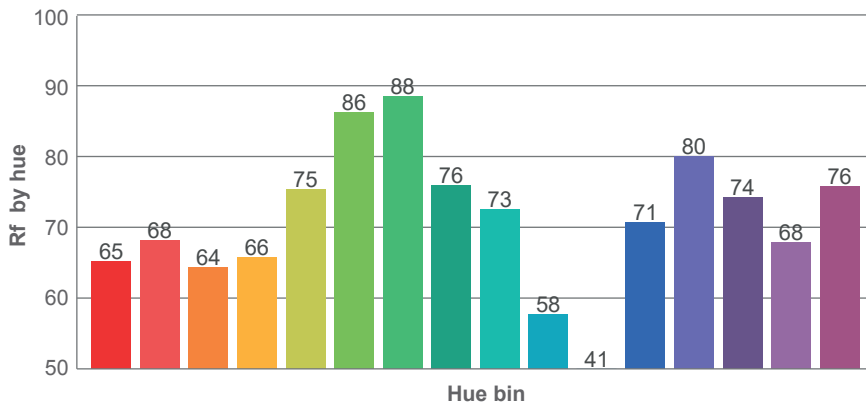
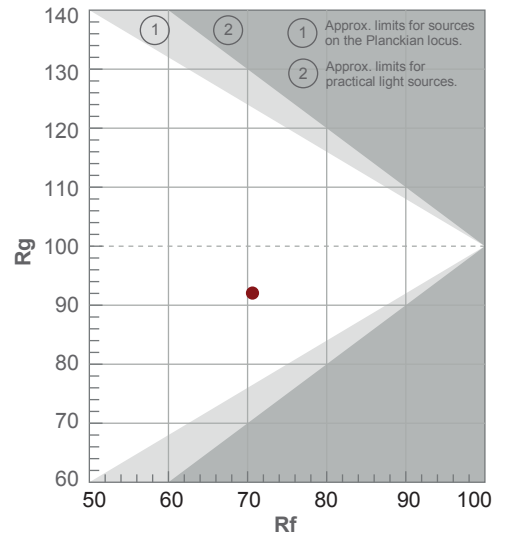
Color temperature	Color rendering index	Red component	Color fidelity	Color gamut	Color quality scale	Color coordinate cie 1931	Color coordinate cie 1931	Color coordinate	Color coordinate	Color deviation from black body
CCT	CRI	CRI R9	TM30 Rf	TM30 Rg	CQS	x	y	u	v	Δuv
7006 K	70.3	-33.4	70.6	92.1	67.4	0.306	0.321	0.196	0.308	0.0006

TM-30 DETAILS

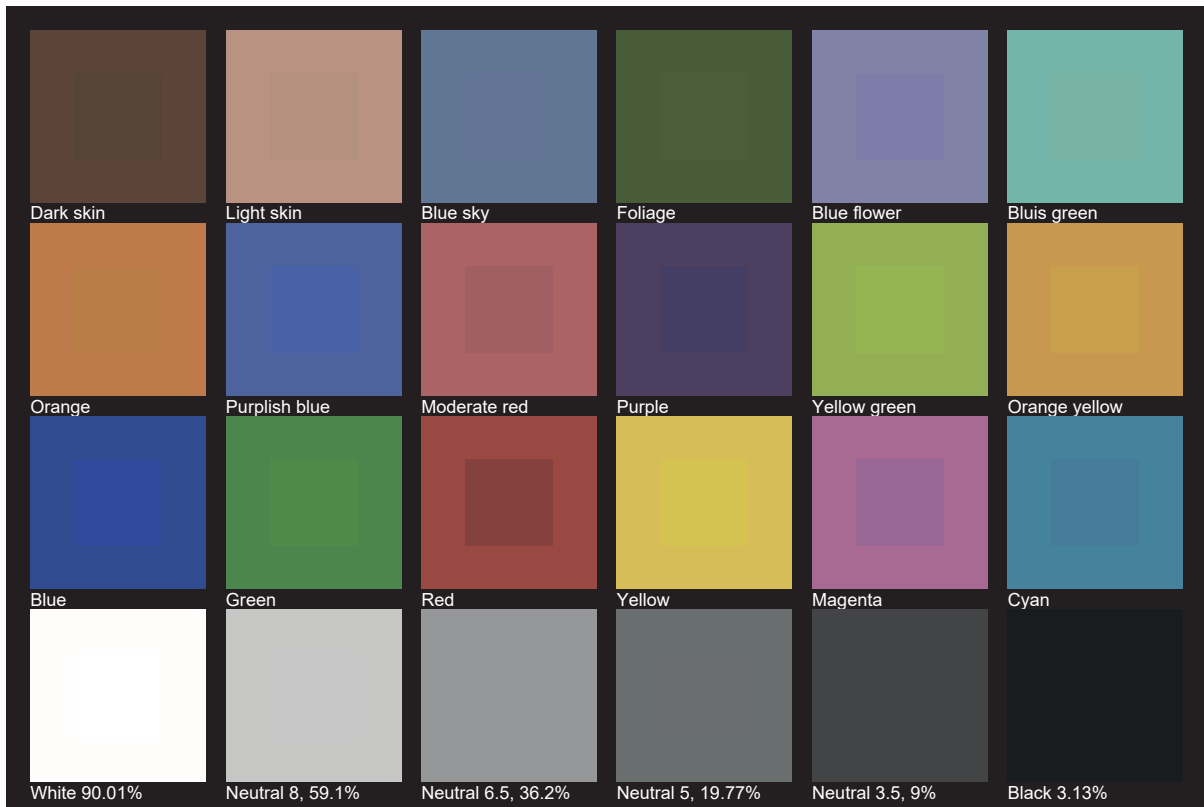
Rf 70.6
Fidelity index Rf

Rg 92.1
Gamut index Rg

Hue Bin	R _f	Shifts (%)	
		Chroma	Hue
1	65	-19%	-3%
2	68	-14%	11%
3	64	-8%	21%
4	66	3%	21%
5	75	9%	12%
6	86	7%	-3%
7	88	-4%	-7%
8	76	-13%	-7%
9	73	-22%	10%
10	58	-14%	27%
11	41	-3%	29%
12	71	6%	16%
13	80	16%	6%
14	74	19%	-11%
15	68	6%	-25%
16	76	-7%	-13%



TLCI 48





AYRTON

Digital Lighting