



KHAMZIN TC

PHOTOMETRY



AYRTON
Digital Lighting



Total Flux	30962 lm (@zoom 128, integrating sphere measurement, Fan mode auto)
-------------------	---

CCT @LED engin	7000 (±500K)
CCT @open	6400 (±500K)
Ra @open	90 (±2)
TLCI	90
TM-30	Rf: 87.6 Rg: 94.0

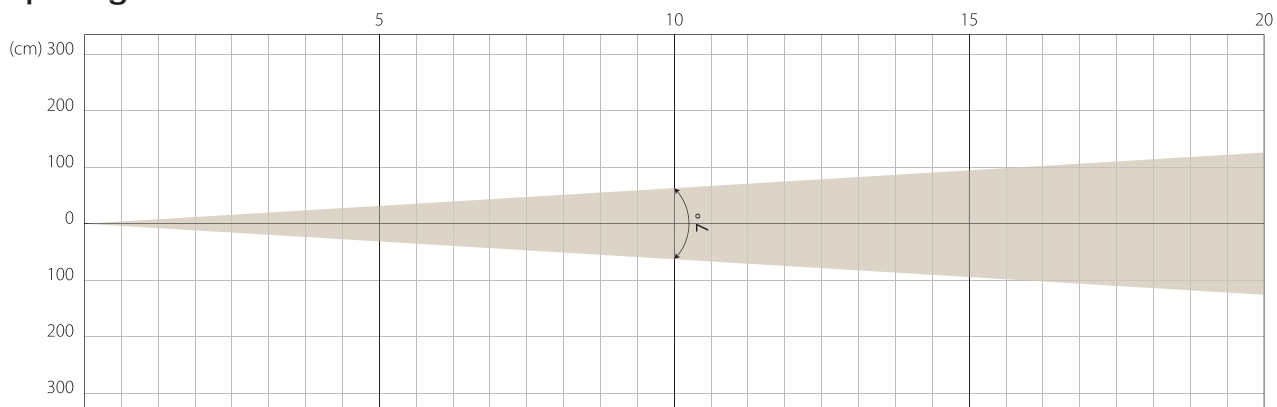
Fan Mode	Noise Level (dBA)	by Goniometer (lm)	by Sphere (lm)
Auto	45,6	25209	30468
Stage	51,5	25965	30962
Silence	43,2	17537	21651
Super Silence	34,4	11758	17113

Note: noise measured @1m distance, static status, ambient 31 dBA.

Voltage / Power	120-240V, 50-60Hz	1150 W
Fixture Dimension / Weight	494 x 778 x 280 mm	39.8 kg
Packing Dimension / Weight	660 x 675 x 560 mm	57 kg

MIN ZOOM

Beam Opening

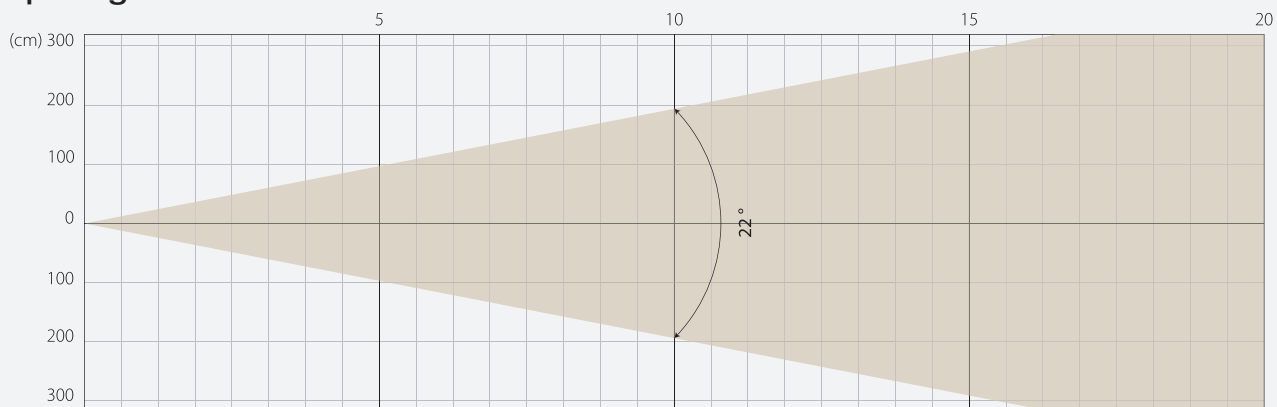


Intensity

Distance (m)	5		10		15		20	
unit	lux	diameter	lux	diameter	lux	diameter	lux	diameter
White	48209	0,61	12052	1,22	5357	1,83	3013	2,45

MIDDLE ZOOM

Beam Opening

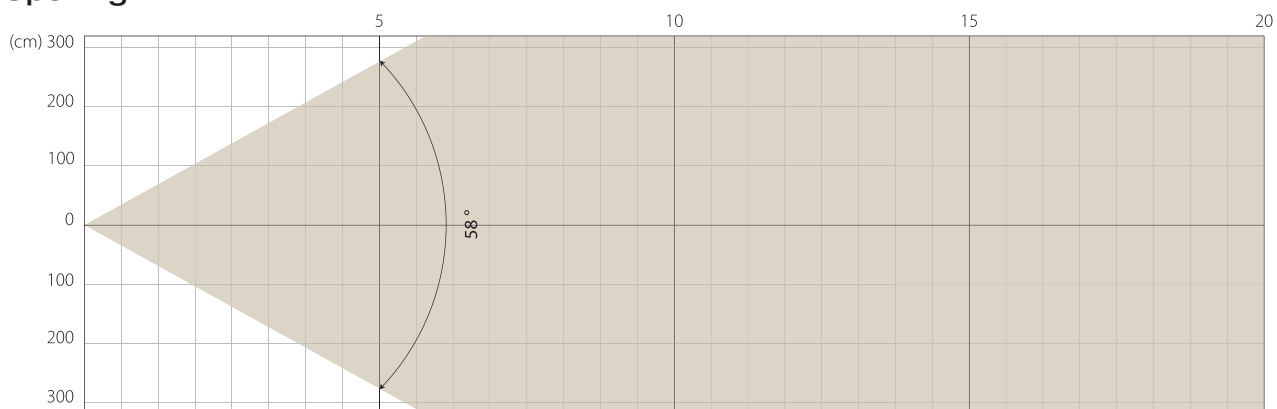


Intensity

Distance (m)	5		10		15		20	
unit	lux	diameter	lux	diameter	lux	diameter	lux	diameter
White	11291	1,94	2823	3,89	1255	5,83	706	7,78

MAX ZOOM

Beam Opening



Intensity

Distance (m)	5		10		15		20	
unit	lux	diameter	lux	diameter	lux	diameter	lux	diameter
White	1933	5,54	483	11,09	215	16,63	121	22,17

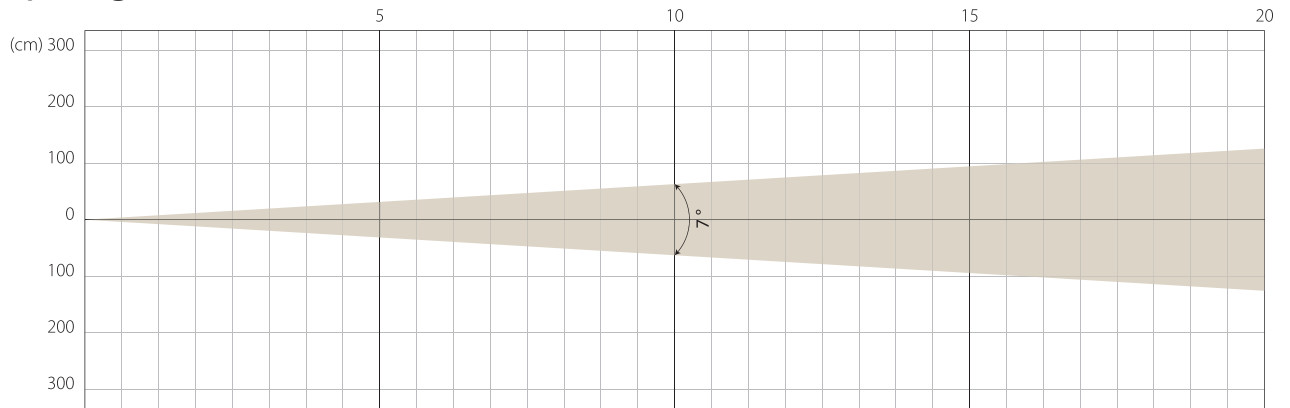
Note: Measurement done with Goniometer

STAGE MODE

NATIVE CRI GREATER THAN 90

MIN ZOOM

Beam Opening

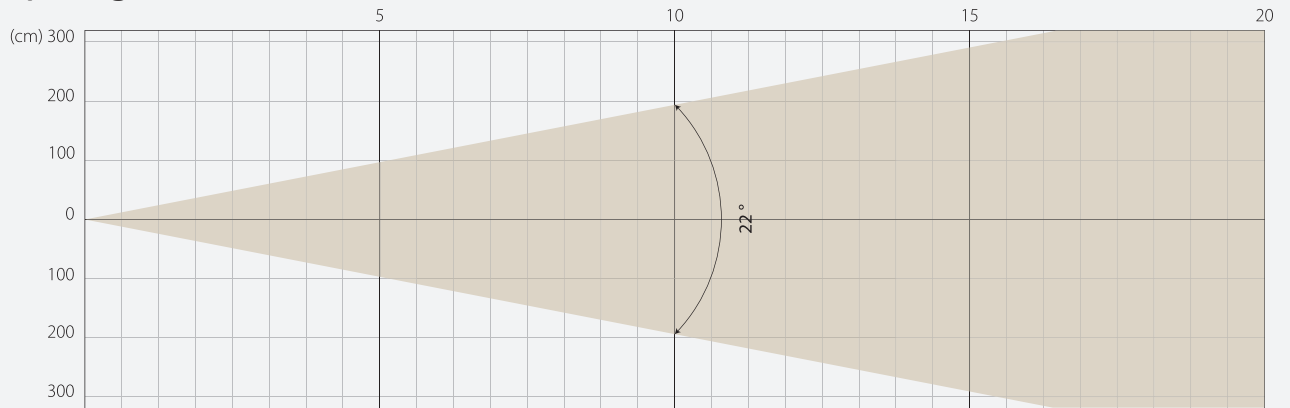


Intensity

Distance (m)	5		10		15		20	
unit	lux	diameter	lux	diameter	lux	diameter	lux	diameter
White	49466	0,61	12366	1,22	5496	1,83	3092	2,45

MIDDLE ZOOM

Beam Opening

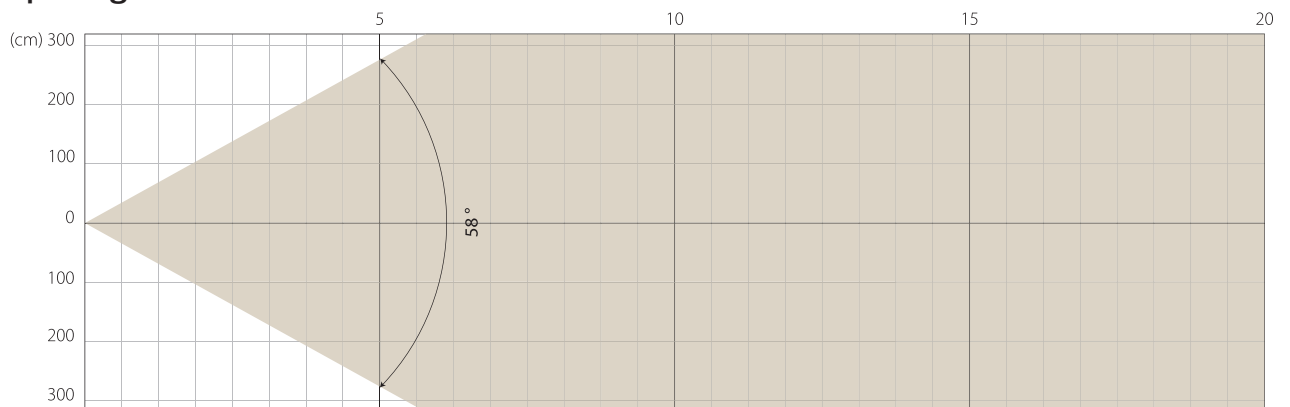


Intensity

Distance (m)	5		10		15		20	
unit	lux	diameter	lux	diameter	lux	diameter	lux	diameter
White	11597	1,94	2899	3,89	1289	5,83	725	7,78

MAX ZOOM

Beam Opening



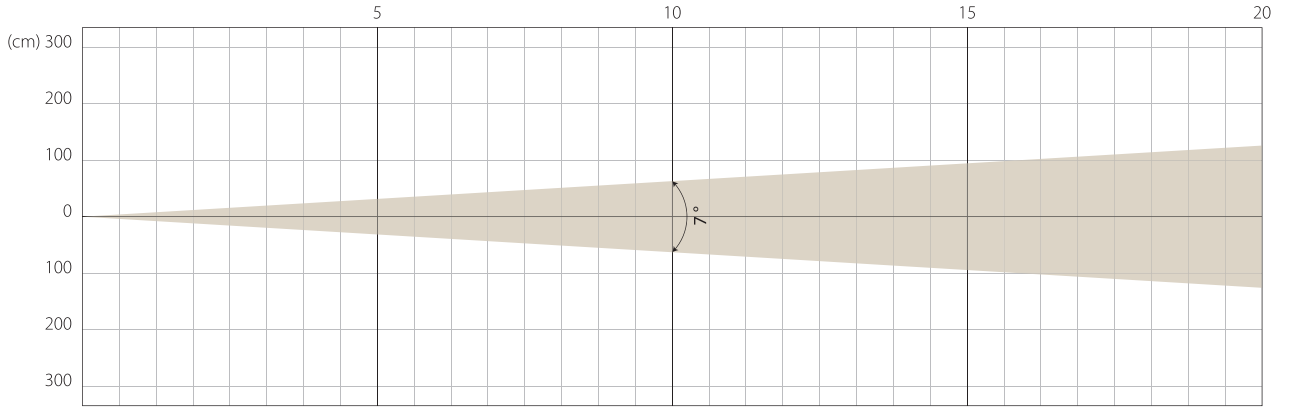
Intensity

Distance (m)	5		10		15		20	
unit	lux	diameter	lux	diameter	lux	diameter	lux	diameter
White	1992	5,54	498	11,09	221	16,63	124	22,17

Note: Measurement done with Goniometer

MIN ZOOM

Beam Opening

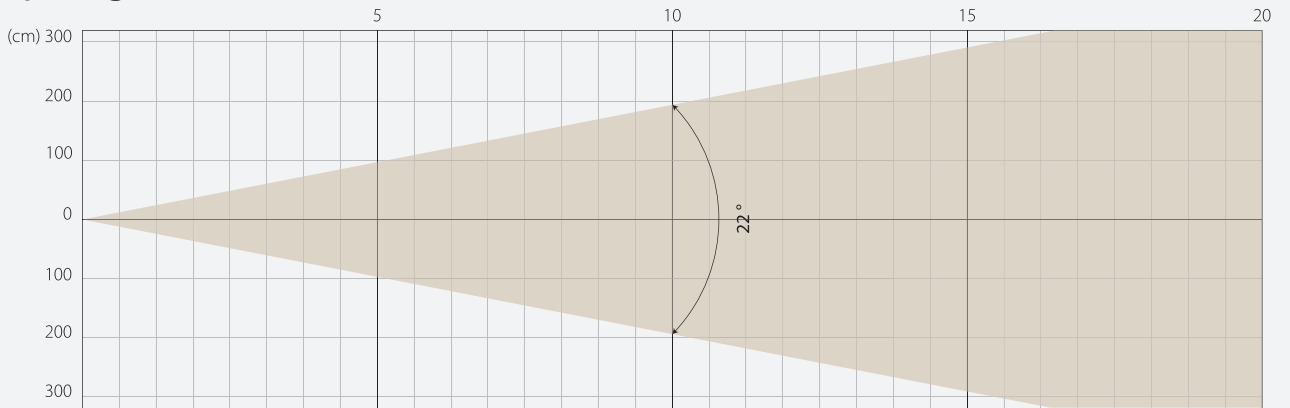


Intensity

Distance (m)	5		10		15		20	
unit	lux	diameter	lux	diameter	lux	diameter	lux	diameter
White	33574	0,61	8394	1,22	3730	1,83	2098	2,45

MIDDLE ZOOM

Beam Opening

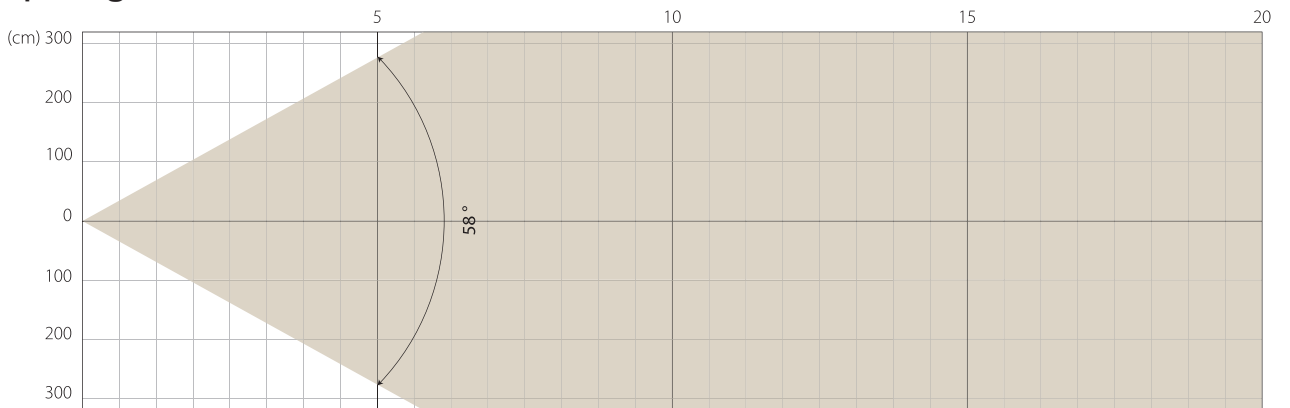


Intensity

Distance (m)	5		10		15		20	
unit	lux	diameter	lux	diameter	lux	diameter	lux	diameter
White	7848	1,94	1962	3,89	872	5,83	490	7,78

MAX ZOOM

Beam Opening



Intensity

Distance (m)	5		10		15		20	
unit	lux	diameter	lux	diameter	lux	diameter	lux	diameter
White	1346	5,54	337	11,09	150	16,63	84	22,17

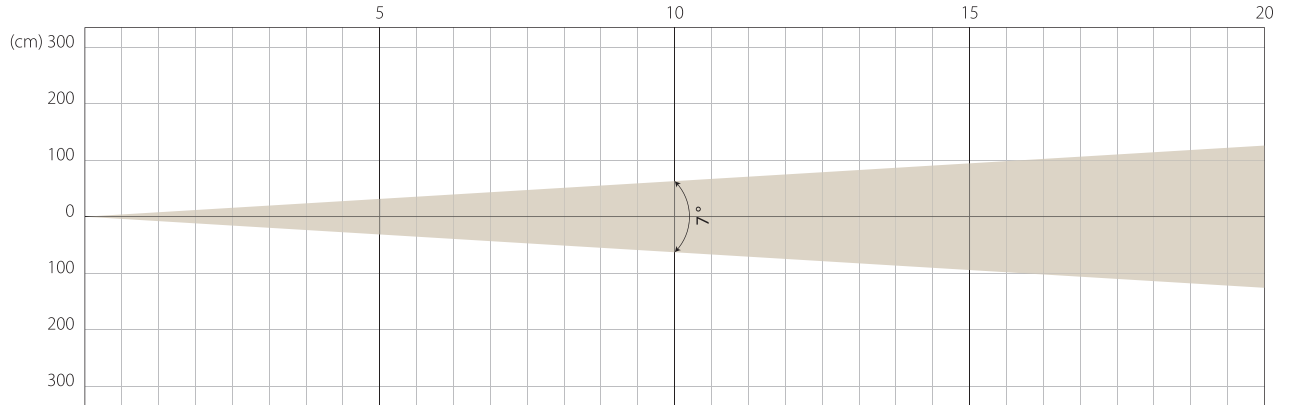
Note: Measurement done with Goniometer

SUPER SILENCE MODE

NATIVE CRI GREATER THAN 90

MIN ZOOM

Beam Opening

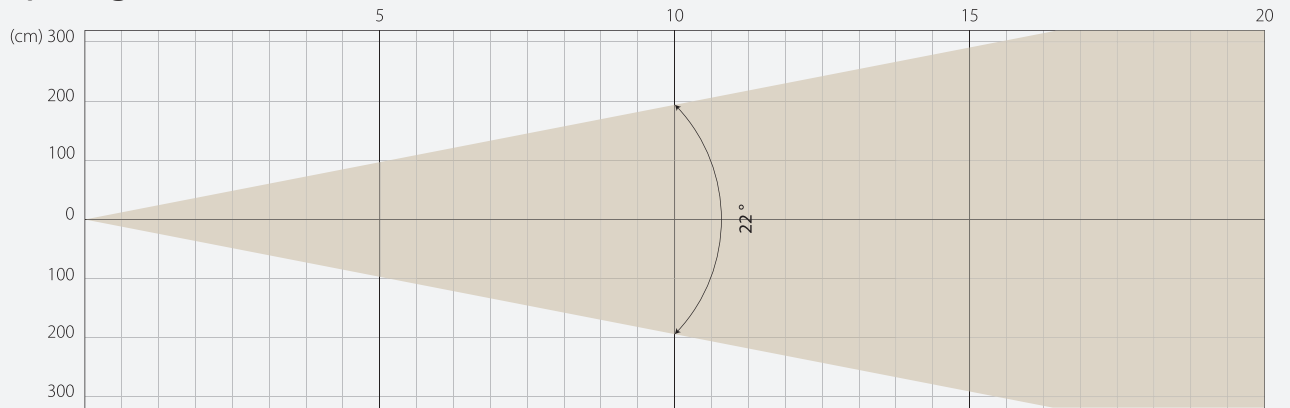


Intensity

Distance (m)	5		10		15		20	
unit	lux	diameter	lux	diameter	lux	diameter	lux	diameter
White	22224	0,61	5556	1,22	2469	1,83	1389	2,45

MIDDLE ZOOM

Beam Opening

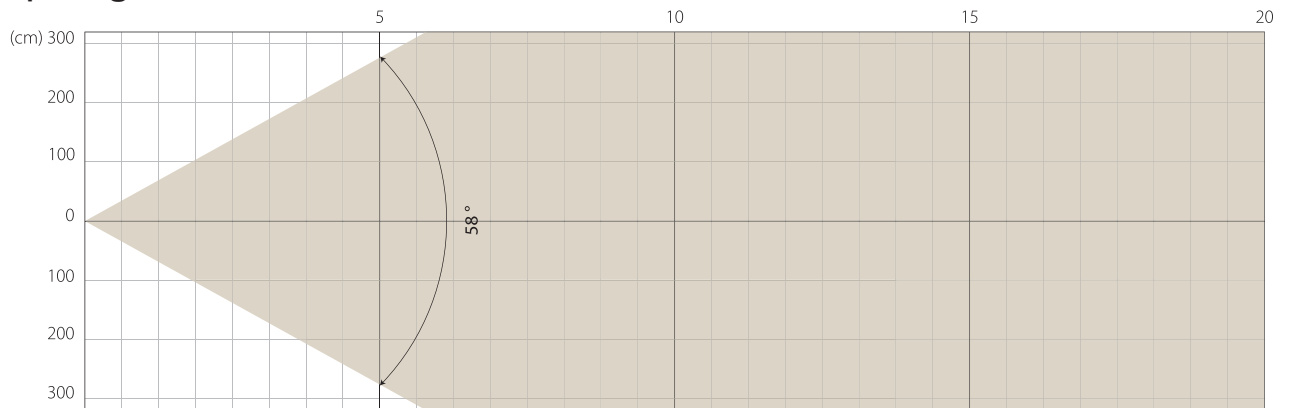


Intensity

Distance (m)	5		10		15		20	
unit	lux	diameter	lux	diameter	lux	diameter	lux	diameter
White	5223	1,94	1306	3,89	580	5,83	326	7,78

MAX ZOOM

Beam Opening

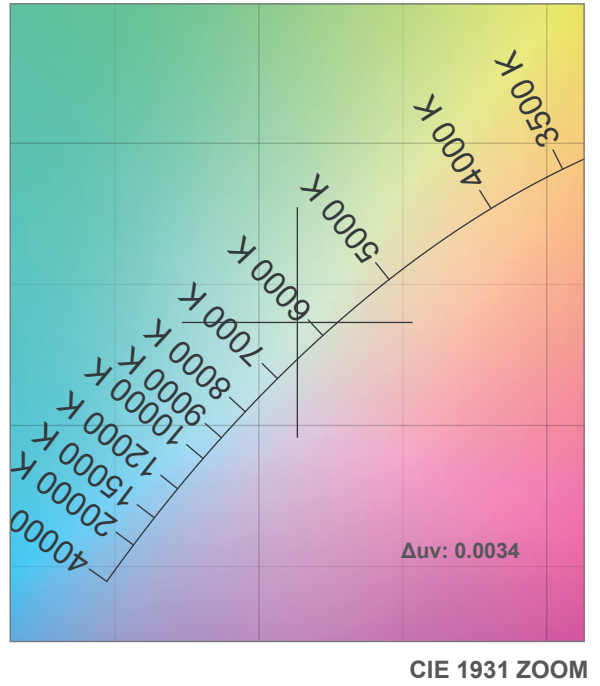
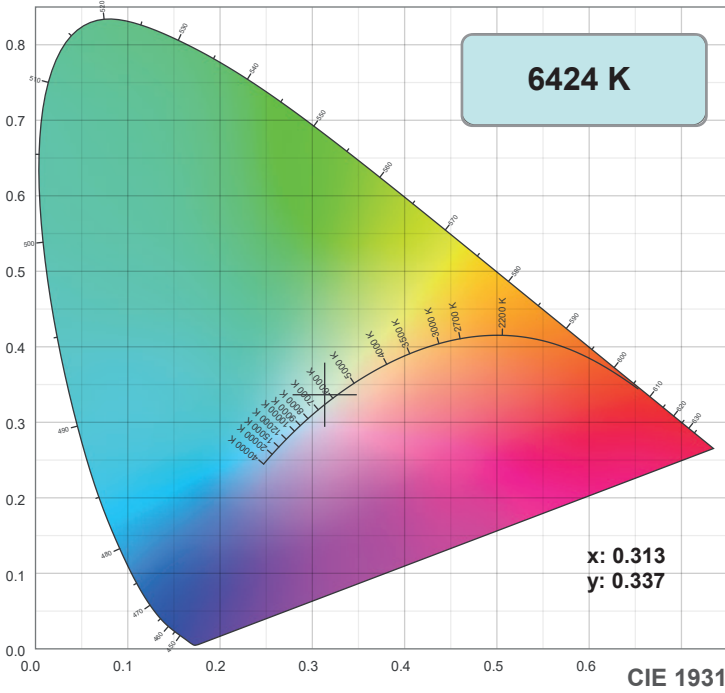


Intensity

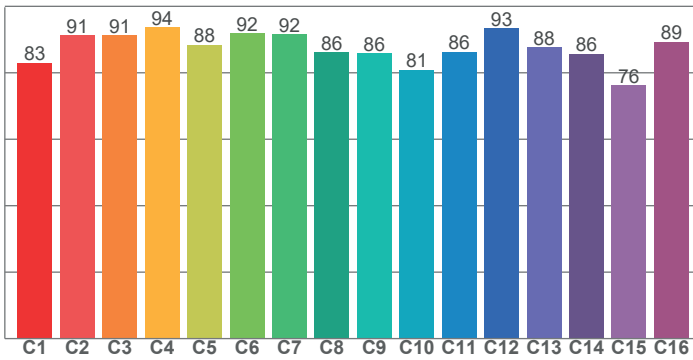
Distance (m)	5		10		15		20	
unit	lux	diameter	lux	diameter	lux	diameter	lux	diameter
White	893	5,54	223	11,09	99	16,63	56	22,17

Note: Measurement done with Goniometer

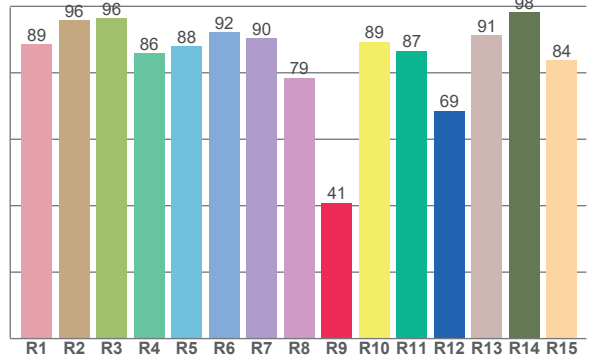
COLOR DETAILS



TM-30: 87.6



CRI: 89.5 (R1-R8)



CRI R values, only R1-R8 are used to calculate final CRI value

R1	R2	R3	R4	R5	R6	R7	R8	R9	R10	R11	R12	R13	R14	R15
88.6	95.7	96.4	85.9	88.0	92.2	90.3	78.5	40.9	89.3	86.6	68.6	91.3	98.2	83.8

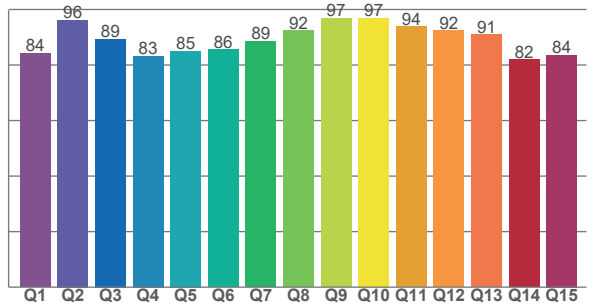
TM30 C values, 16 binned values out of total of 99 C values

C1	C2	C3	C4	C5	C6	C7	C8	C9	C10	C11	C12	C13	C14	C15	C16
82.9	91.3	91.3	93.6	88.4	91.9	91.6	86.2	85.9	80.9	86.3	93.4	87.6	85.7	76.2	89.2

CQS Q values

Q1	Q2	Q3	Q4	Q5	Q6	Q7	Q8	Q9	Q10	Q11	Q12	Q13	Q14	Q15
84.2	96.3	89.4	83.2	85.1	85.6	88.6	92.3	96.9	96.9	93.8	92.3	90.9	82.0	83.7

CQS: 88.3



Color parameters

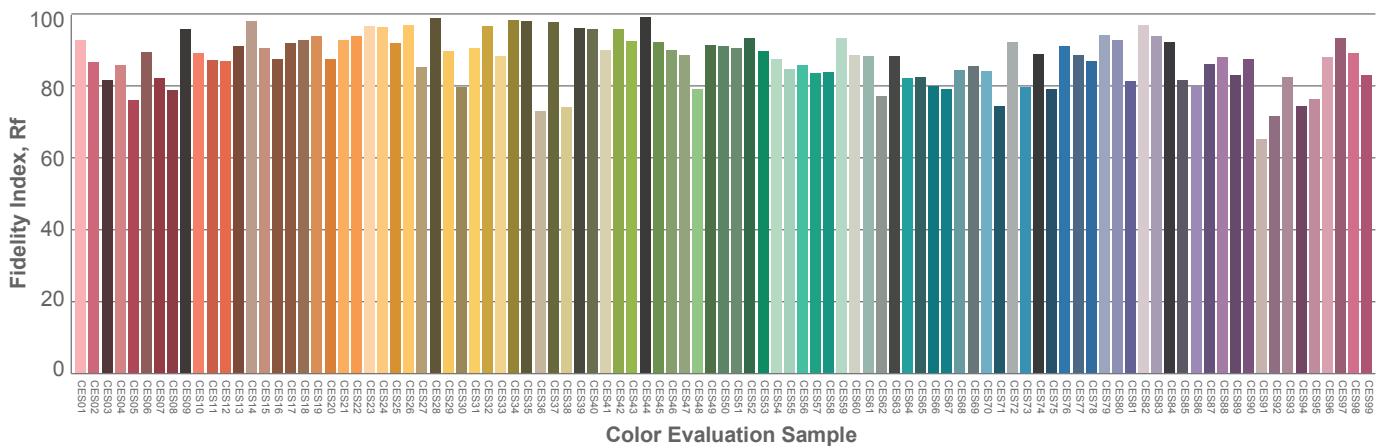
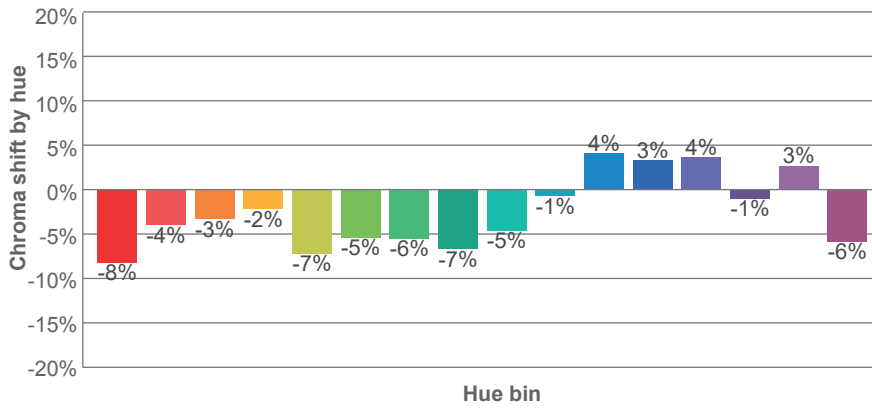
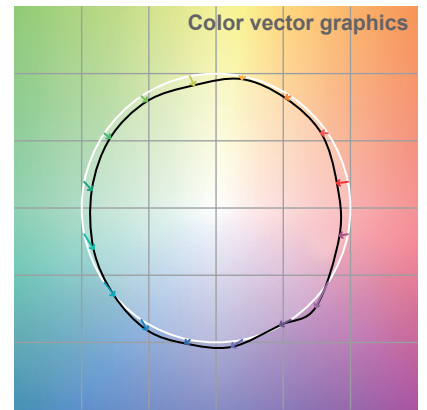
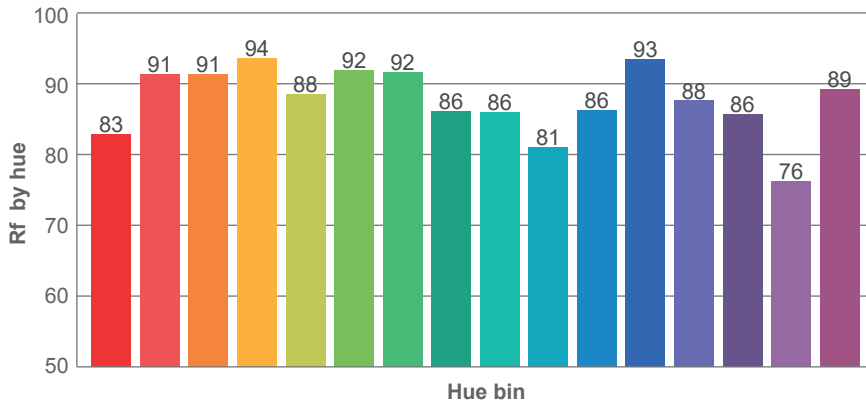
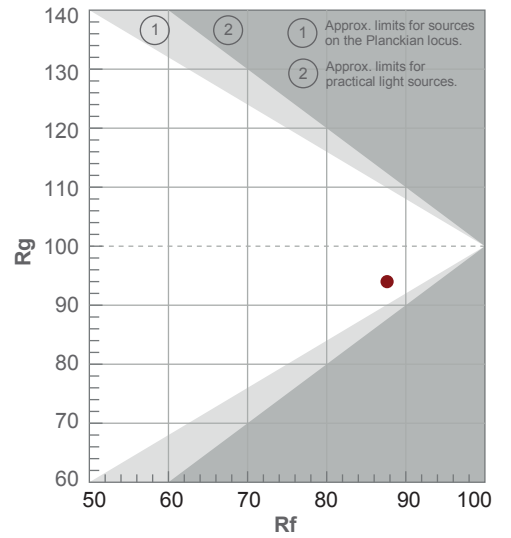
Color temperature	Color rendering index	Red component	Color fidelity	Color gamut	Color quality scale	Color coordinate cie 1931	Color coordinate cie 1931	Color coordinate	Color coordinate	Color deviation from black body
CCT	CRI	CRI R9	TM30 Rf	TM30 Rg	CQS	x	y	u	v	Δuv
6424 K	89.5	40.9	87.6	94.0	88.3	0.313	0.337	0.196	0.315	0.0034

TM-30 DETAILS

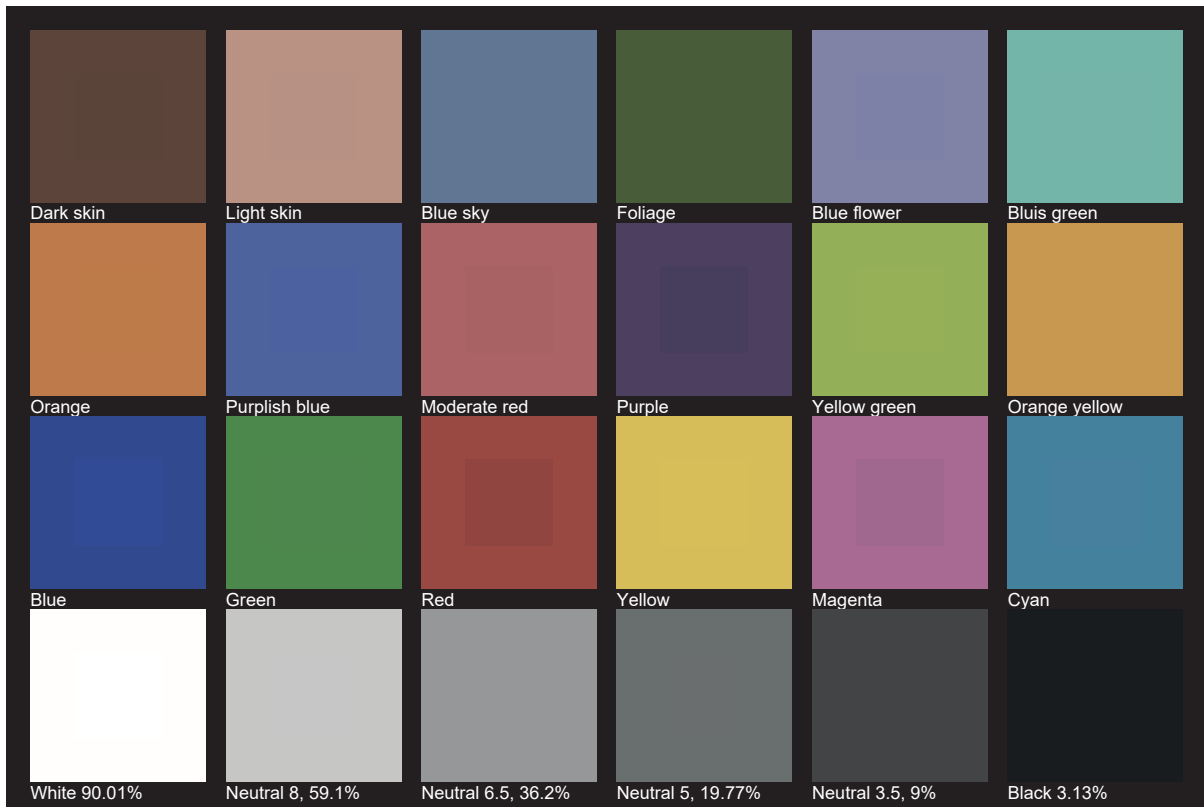
Rf 87.6
Fidelity index Rf

Rg 94.0
Gamut index Rg

Hue Bin	R _f	Shifts (%)	
		Chroma	Hue
1	83	-8%	1%
2	91	-4%	3%
3	91	-3%	2%
4	94	-2%	0%
5	88	-7%	-2%
6	92	-5%	-1%
7	92	-6%	0%
8	86	-7%	5%
9	86	-5%	12%
10	81	-1%	12%
11	86	4%	8%
12	93	3%	-3%
13	88	4%	-9%
14	86	-1%	-9%
15	76	3%	-20%
16	89	-6%	-2%



TLCI 90





AYRTON

Digital Lighting